



The Conservation Council of Ontario

Conservation Trends Report September, 2011



Prepared for the Conservation Council of Ontario by



Introduction

This report is the first of a series that will track public attitudes and commitment toward conservation. It draws upon opinion polling conducted for the Conservation Council of Ontario by Oracle Poll Research in 2006 and 2011.

The Conservation Council of Ontario is a sixty year-old association of conservation leaders in Ontario. Our membership includes organizations, individuals, and (more recently) municipalities and companies that share in our vision of Ontario as a conserver society.

The Conservation Council has undertaken this project as part of our strategy to support a voluntary transition to a conserver society in Ontario. The complete strategy can be found on our website, www.weconserve.ca/strategy. This report is in support of the section, "Evaluating Our Progress".

Through "We Conserve," the Conservation Council and its members seek to be a catalyst for the voluntary transition to a conserver society. In particular, we have identified four strategic actions:

1. promote conservation
2. promote distributed leadership on conservation
3. promote effective networking (provincially and locally)
4. promote innovation.

This research is designed to help us plan conservation programs: social marketing, support programs, and government policy. In particular, we are looking for:

1. Do public understand the importance of conservation?
2. Have people made a personal commitment to conserve?
3. What do people want from their governments?

This being an election year, we also asked two questions as indicators of public attitudes toward the role of government and taxation.

Defining Conservation

To conserve is to use less. The real challenge is to live better by using less. This is why we define conservation as "the art of living lightly."

Those who get it, really get it. From farmer's markets and community gardens, to biking to work or school, there is a strong social movement across Ontario towards living a healthier and lighter lifestyle. Conservation offers us the chance not just to survive the next crisis, but to redefine what we mean by "the good life."

We are all conservers, although how we choose to conserve is as individual as each and every one of us. Our motives to conserve can be short-term self interest or long-term values. We can conserve to save money, or we can conserve to save the planet.

As a society, conservation improves our ability to weather economic or environmental crises and it can also improve public health and our sense of community. Any way you look at it, conservation is good.

Our research shows not only does the public get it, but they are increasingly making a conserver lifestyle a priority. This is the most positive trend of all.

In the face of economic turmoil and the pressure to cut taxes and downsize government, there is an alternative future emerging. Our challenge is help it along, to make conservation easy, affordable, and desirable.



Chris Winter
Executive Director
The Conservation Council of Ontario

2011 Key Findings

In a nutshell...

- There is a strong culture of conservation in Ontario.
- People choose to conserve in their own lives.
- People understand how conservation addresses provincial priorities of the economy, the cost of living, the environment, healthy communities, and public health.
- People expect government leadership and support.



These conclusions have a dramatic impact on how environmental issues need to be addressed by our governments.

The research shows there is a strong movement towards a conserver economy and a personal desire to live better by living lightly. This movement is running directly counter to conventional theories of economic stability through exponential growth.

In essence, the green movement has created a second economy that centres around the provision of local, green products and services. Tougher to measure than big business investments, a resilient local economy provides an excellent buffer to international pressures, increased job satisfaction, and stronger communities.

For many different reasons, people have made conservation a personal priority, whether to reduce the cost of living, live a healthier lifestyle, or contribute to solving global issues of climate change and resource depletion.

Because conservation is both a strong cultural value and a personal lifestyle choice, a conservation ethic needs to be infused throughout all social and economic development policy. The environment is no longer something out there to be protected; it is part of who we are.

For environmentalists, businesses and governments alike, the message is clear:

- living well shouldn't cost the planet,
- saving the planet shouldn't be a sacrifice.



**Sooner or later, by choice or by crisis,
we will live in a conserver society.
We prefer sooner, and by choice**

Deep Trends

Voters are concerned about our future, including the cost of living (72%), public health and health care (71%), the economy (57%), the environment (50%), public education (50%) and crime and public safety (41%).

Most people see conservation (defined as “living better by using less”) as important in addressing those concerns, including ensuring a healthy environment (86%), ensuring a healthy economy (78%), promoting public health and reducing health care costs (69%), lowering the cost of living (67%), and promoting safe communities and reducing crime (56%).

Almost everyone in Ontario practices conservation, with 65% saying they conserve daily, and 26% saying they conserve most of the time.

- 79% feel Ontarians need to do a better job of conserving electricity
- 47% would ride bikes if there were safe bike routes
- 68% want to live in a complete, walkable community

There is clear public support for strong government leadership in legislation and programs to support a healthier and sustainable future for Ontario, with only 12% believing government should be smaller. This support is strong across supporters of all political parties.

Almost six in ten or 59% are of the opinion that taxes should be maintained and a further 19% that they should be increased, while only 14% believe that they should be reduced.

Hot Issues

Gravel Pits: The question on top-of-mind response to the term “conservation” always yields interesting results, because it gives us an indication of any emerging issues. Minerals and gravel pits suddenly appeared on the list of responses this year, perhaps a reflection of the current tension over a proposed 937 hectare quarry in Melancthon Township.

Renewable Energy: We did not ask specific questions on renewable power, given that the Ontario Sustainable Energy Association had recently contracted with Oraclepoll Research in July of this year to conduct a poll on wind and solar power. The results showed that over 7 of 10 Ontarians support green energy initiatives (http://www.ontario-sea.org/Page.asp?PageID=122&ContentID=3170&SiteNodeID=272&BL_ExpandID=).

Government Leadership: Our polling discovered that Ontarians want good government, not less government. Break these numbers down by voter intent and region and we find some interesting results:

1. Only 20% of Progressive Conservative supporters want smaller government. 30% favour tax cuts, however 55% percent of PC supporters would like to see taxes maintained at current levels to keep existing services.
2. In the City of Toronto, where the Mayor is proposing radical and deep cuts to city services, the regional results were astounding. We found absolutely no support (0%) for either a reduction in services or tax cuts.

Survey Report

Prepared for the:



**The Conservation
Council of Ontario**

By:



August 2011

Table of Contents

M E T H O D O L O G Y A N D L O G I S T I C S	3
E X E C U T I V E S U M M A R Y	4
R E S U L T S B Y Q U E S T I O N	11
C R O S S T A B U L A T I O N S	28

M e t h o d o l o g y a n d L o g i s t i c s

Overview

- The following represents the results of a public opinion survey of 1,000 voting age Ontario residents conducted in the Oraclepoll Research Limited Ontario omnibus survey for August 2011.
- The results presented in this report are the findings from those questions subscribed to by the Conservation Council of Ontario (CCO).

Study Sample

- A total of 1,000 respondents, 18 years of age and older from across Ontario were interviewed. The margin of error for this survey is $\pm 3.1\%$, 19/20 times.

Survey Method

- The survey was conducted using computer-assisted techniques of telephone interviewing (CATI) and random number selection. Interviews were conducted in the respondents preferred language of choice.
- A total of 30% of all interviews were monitored and the management of Oraclepoll Research Limited supervised 100%.

Logistics

- Interviews were conducted between the days of August 12th and August 19th 2011.
- Initial calls were made from 5:30 p.m. to 9:00 p.m. with call-backs of no-answers and busy numbers made on a (staggered) daily rotating basis up to 5 times (from 10:00 a.m. to 9:00 p.m.) until contact was made. In addition, telephone interview appointments were attempted with those respondents unable to complete the survey at the time of contact.

E x e c u t i v e S u m m a r y

OMNIBUS RESULTS

The following are the results of questions included by Oraclepoll Research Limited and provided to the CCO as part of being a subscriber to the omnibus survey.

- Respondents were first asked what they felt was the **most important issue facing the province of Ontario** at this time. A total of 22% named the economy, closely followed by 20% that said health care and 19% job creation. The budget was cited by 7%, the environment by 6% and rising utility prices by 3%. A total of 10% did not know or had no opinion.
- When then asked about their **vote intent**, 42% of decided voters back the PC's, 38% the Liberals, while the NDP trail with 13% support and the Green's with 7%. A total of 14% were undecided.
- Voters are split on the issue of **change in Ontario politics**. Slightly fewer than half or 49% of respondents said that it is time for a change of governments in Ontario, while 30% claimed that the Liberals should be re-elected and 22% did not know.
- When asked **why they would favor change**, 21% named taxation, 13% health care, 11% job creation, 7% honesty, 5% rising prices, 5% the environment, 5% education, and 5% the budget deficit. 21% had no response or were unsure.

CONCERN

Respondents were read a series of statements that they were asked to agree or disagree with.

<u>“Please rate your level of concern with each of the following using a scale from one not at all concerned to five very concerned?”</u>	Total Concerned (Concerned & Very Concerned)
The cost of living including, food, energy and housing	72%
The quality of public health and health care in Ontario	71%
The state of Ontario’s economy	57%
The state of Ontario’s environment	50%
The quality of public education in Ontario	50%
Crime and public safety	42%

Concern among voters was highest for the cost of living and the quality of public health and health care in the province.

CONSERVATION

Respondents were first asked in an open ended question what **first came to mind when they thought of the term conservation**. The majority of responses identified conservation issues (energy, biodiversity, pollution, farmland), and only a small percentage gave a top-of-mind response reflecting a conserver lifestyle and individual action.

Mining and aggregates is a significant top-of-mind concern for 2011, with 15% mentioning minerals and gravel as conservation issues.

<i>When thinking about conservation what first comes to mind?</i> <i>TOP FIVE RESPONSES</i>	<i>2006</i>	<i>2011</i>
1. Conserve energy and electricity	22%	18%
2. Conserving other resources (minerals and gravel)	-	15%
3. Protecting nature and biodiversity	21%	29%
4. Preventing pollution and waste	24%	10%
5. Saving farmland and promoting compact development	5%	7%
6. Living lightly / personal benefit	4%	8%
7. Don't know	13%	11%

The following preamble was read to those interviewed and they were then asked to rate the **importance of conservation in helping to achieve a series of goals.**

*“I will now read you a **definition of conservation.** Conservation is how we can balance our needs and desires as individuals and as a society with a respect for nature and the need to protect our future supplies of natural resources. Conservation is how we can live well while using less.”*

<i>“In your opinion, <u>how important a role can conservation play in helping to achieve the following goals for Ontario?</u> Please use a scale from one not at all important top five very important.”</i>	Total Important (Important & Very Important)
Ensuring a healthy environment	86%
Ensuring a healthy economy	78%
Promoting public health and reducing health care costs in Ontario	69%
Lowering the cost of living including food, energy & housing	67%
Promoting safe communities and reducing crime	56%

Conservation is seen as being most important with respect to ensuring a healthy environment and a health economy. A strong majority also see it as important in promoting public health and lowering the cost of living, but lowest in promoting safe communities.

TRACKING

The **following questions were first asked in a 2006 Ontario wide survey conducted by Oraclepoll Research Limited for the CCO** and were once again asked in the current survey.

When asked **how often that they make a conscious effort to conserve**, 65% said that they do it on a daily basis (69% in 2006), 26% conserve most of the time (22% in 2006) and 10% conserve from time to time (8% in 2006). In 2006 1% claimed that they never conserve compared to none in the current survey.

Respondents were then asked to **rate their level of agreement with each of the following statements related to conservation.**

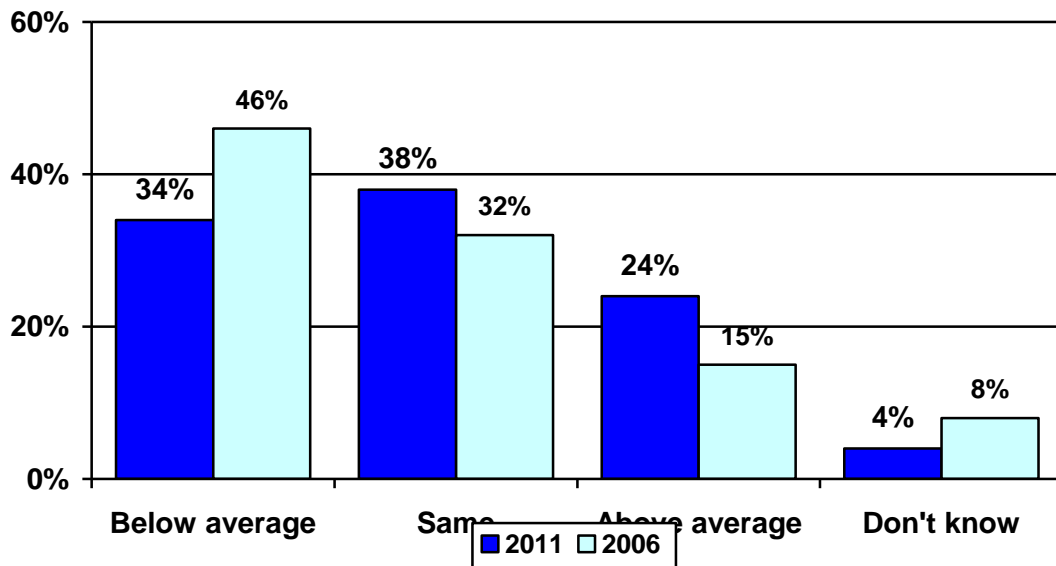
<i><u>“Please rate your level of agreement with the following statements using a scale from one strongly disagree to five strongly agree?”</u></i>	<i>2006 Total Agree</i>	<i>2011 Total Agree</i>
Conservation is important to me	93%	87%
Overall, I feel that Ontarians need to do a better job of conserving energy	84%	79%
I am better at conserving than others	54%	54%

There is very strong buy in with respect to energy conservation being important, although the numbers are slightly lower compared to 2006. A significant 79% also agreed that Ontarians need to do a better job at conserving (6% lower than 2006) and a similar 54% over both survey periods agreed that they are better at conserving than others.

ELECTRICITY

A series of questions were asked about home electricity usage.

“Overall, would you say that your home energy usage is above average, below average or about the same as other Ontarians?”



Only 24% claimed that their home energy usage is above average, while most feel it is either the same (38%) or below average (34%). Overall, the number of people who see themselves as being above-average consumers has increased over the past five years.

Most Ontario homes also have **compact fluorescent or LED bulbs** as only 10% claimed that they had none.

2006	2011
<input type="checkbox"/> 24% have none	<input type="checkbox"/> 10% have none
<input type="checkbox"/> 8% have 1 or 2	<input type="checkbox"/> 2% have 1 or 2
<input type="checkbox"/> 20% have 2 – 5	<input type="checkbox"/> 14% have 2 – 5
<input type="checkbox"/> 27% 5 – 10	<input type="checkbox"/> 19% 5 – 10
<input type="checkbox"/> 21% 10 or more	<input type="checkbox"/> 54% 10 or more
<input type="checkbox"/> 2% did not know	<input type="checkbox"/> 2% did not know

In general, people appear to be adopting energy-efficient lighting.

When asked about **how often they use a clothesline to air dry laundry**, 49% said never, 26% occasionally and 26% almost all or all of the time. The total number of people who use a clothesline (52%) is a slight increase over the 48% of respondents in 2006 who said they air dry clothes.

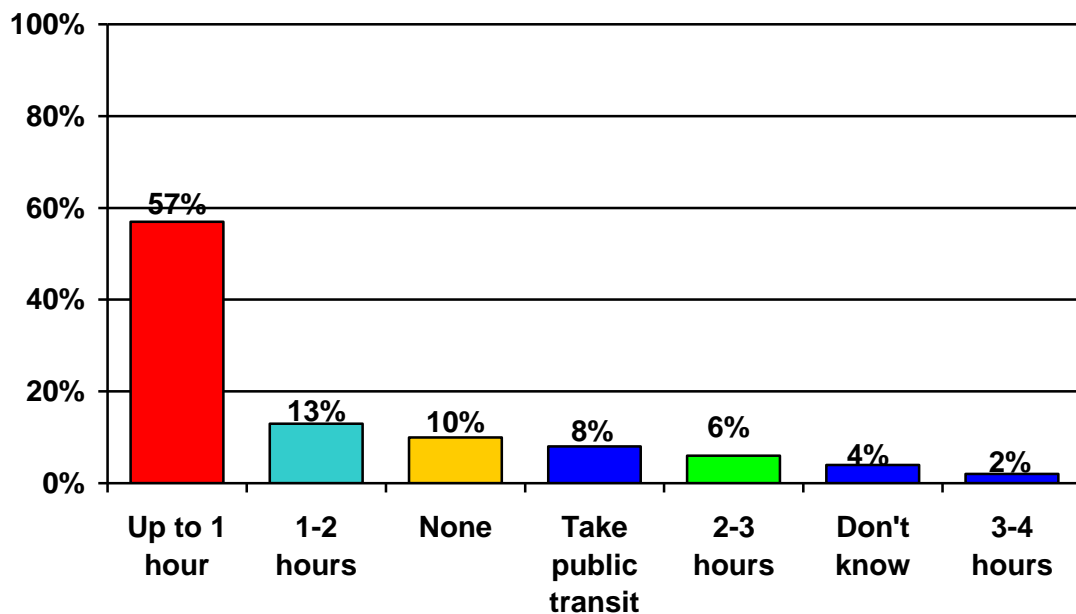
All respondents were also asked about **what source they find most trustworthy when it comes to electricity conservation**.

- ☐ 42% said the media
- ☐ 14% claimed their local utility
- ☐ 8% government agencies
- ☐ 6% the internet or websites
- ☐ 6% experts
- ☐ 5% municipal councillors
- ☐ 18% did not know and 2% said that there was no source

TRANSPORTATION

A series of questions were asked about personal transportation.

"In a typical day, how much time do you spend commuting in a personal vehicle?"



Most or 57% commute in a personal vehicle for up to one hour, 13% 1-2 hours, 6% 2-3 hours and 2% 3-4 hours in a typical day. 10% do not commute, 8% take public transit and 4% did not know. In 2006, the numbers were similar, with 56% saying they spent up to one hour commuting in a personal vehicle.

When asked how **much they commute in an average day compared to five years ago**, more than half or 54% said less, 37% about the same and only 10% more. In 2006, in response to the same question, only 33% said less, 40% said about the same, and 24% said more.

The results indicate a subtle shift away from commuting long distances by personal vehicle.

Respondents were asked how important each of the following are as reasons to encourage Ontarians to drive less or adopt alternatives to driving.

“

<p><i>“How important are each of the following reasons that would <u>encourage Ontarians like you to drive less or adopt alternatives that will help conserve gas.</u> Please use a scale from one not important to five very important.”</i></p>	<p>Total Important (Important & Very Important)</p>
Helping to reduce smog and asthma	78%
Having government incentives for driving alternatives	73%
Saving gas money	72%
Contributing to a greener & more efficient economy	70%
Having convenient alternatives	68%
Helping to reduce the effects of climate change	67%

A high level of importance was placed on all areas, with the strongest level being related to helping to reduce smog and asthma.

FOOD

Food was a new area of enquiry for us, with a single question asked where respondents were asked to rank in **priority each of the following motivators that would encourage the purchase of locally grown food.**

Please rank in order of priority each of the following <u>motivators that would encourage Ontarians like you to buy locally grown food.</u> (Food produced within 100 kilometers of your home)	Rank
1. Lowering energy use & greenhouse gas emissions from imported foods	4.8
2. Food that tastes better	4.5
3. Support for healthy farming practices	4.3
4. Protecting Ontario's best farmland from development	3.8
5. Lower prices for local food	3.4
6. Food that is healthier	3.4
7. Support for local farmers	3.2

With 1 being the lowest priority, and 7 being the highest priority, the results showed strong support for each of the stated reasons, with none of the answers being ranked below a 3.

Environmental reasons had a somewhat stronger persuasion, holding three of the top four positions. Ranked highest was lowering energy use / greenhouse gas emissions, followed by better tasting food and support for healthy farming practices.

COMMUNITY

Respondents were asked to rate each of the following as aspects about living in a community.

“How important are each of the following aspects about living in a community to you. Please use a scale from one not at all important to five very important.”

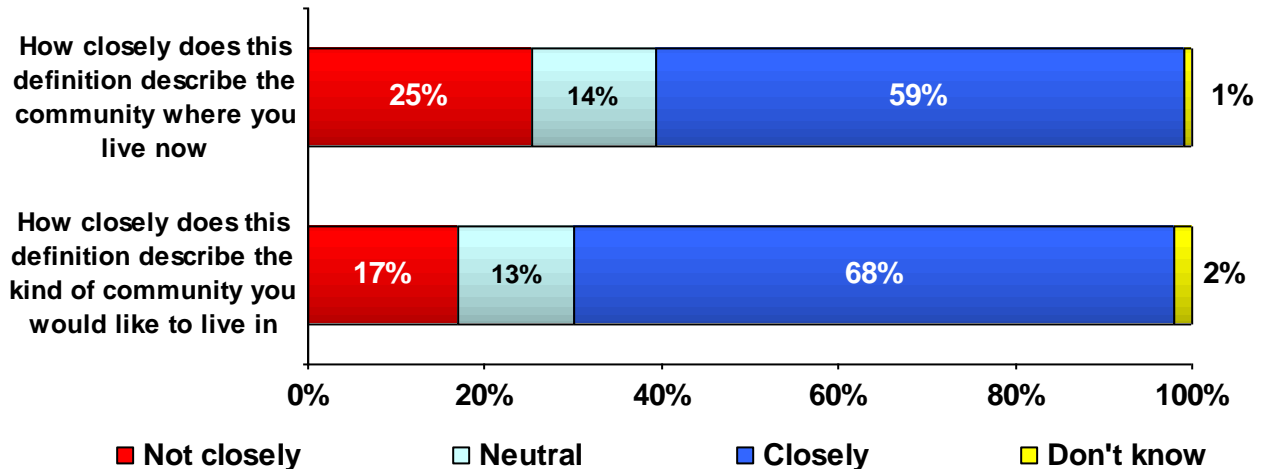
<i>“How important are each of the following aspects about living in a community to you. Please use a scale from one not important to five very important.”</i>	Total Important (Important & Very Important) 2006	Total Important (Important & Very Important) 2011
Having public green spaces such as parks for recreation in my neighbourhood	89%	86%
Being able to walk to local stores	64%	76%
Living close enough to work or school that I can get there by walking, transit or cycling	59%	70%
Having friends and neighbours within easy walking distance	58%	65%

The high level of importance was placed on having green spaces, followed by being able to walk to local establishments.

There is a measurable increase in the desire to live in a walkable community.

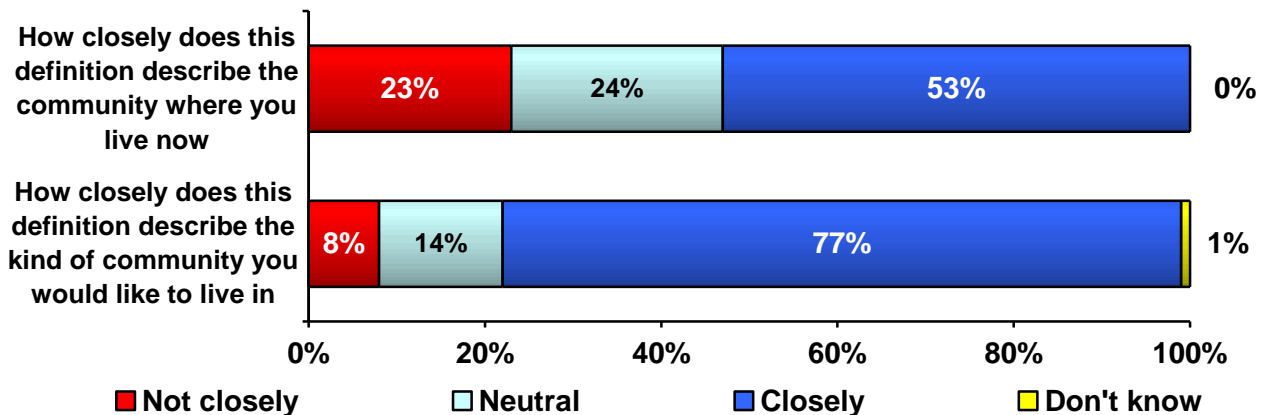
All respondents were read the following preamble and were asked two follow up questions.

“A complete community is defined as a neighbourhood-based community that has most everything you need within easy walking distance. It usually has a central area with shops, local businesses, playgrounds and community services, small parks and other green spaces, and lots of cycling and walking paths, all surrounded by a mix of smaller homes located fairly close together.”



While almost six in ten (59%) claimed that the definition provided resembles their current community, a higher 69% said it resembles the community that they would like to live in.

In 2006, the gap between satisfaction with where you live now and the desire for a more complete community was even greater:



Respondents were then asked to **rate their level of agreement with each of the following statements.**

<i><u>“Please rate your level of agreement with the following statements using a scale from one strongly disagree to five strongly agree?”</u></i>	<i>Total Agree (Agree & Strongly Agree) 2006</i>	<i>Total Agree (Agree & Strongly Agree) 2011</i>
I would drive less if there were other convenient, safe transportation options, like public transit or cycling	55%	55%
I would ride my bike to work, school or shopping if there were safe bicycle routes and bicycle paths in my community	47%	47%
I prefer to live in a bigger house with a large yard, even if that means that more farmland and natural areas has to be used up to support this lifestyle	11%	11%

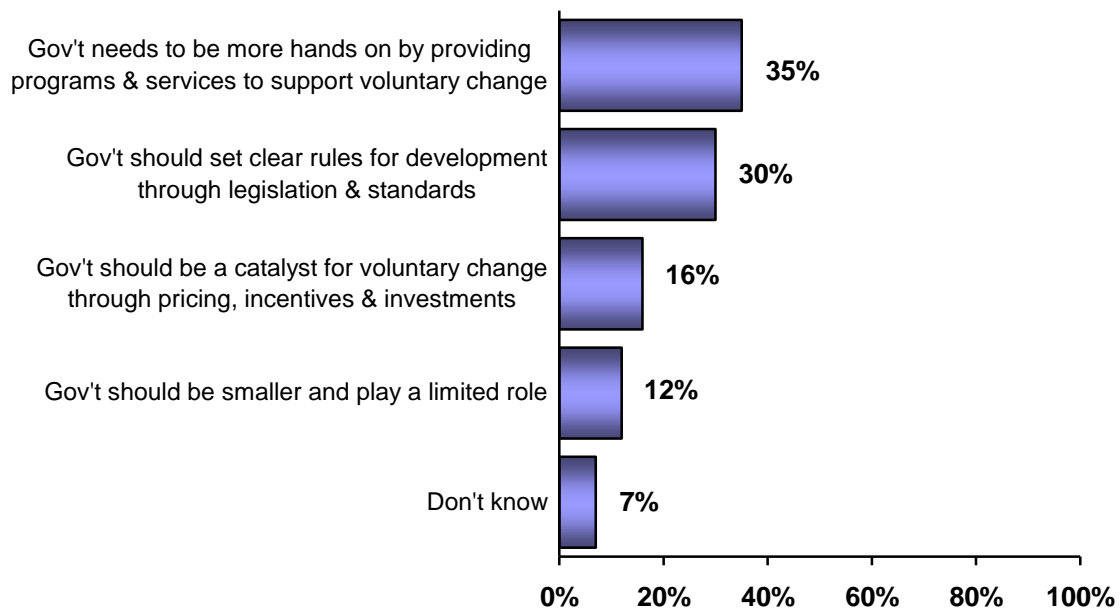
Roughly half of respondents would drive less and ride a bike if there were options available and only 11% would live in a bigger house at the expense of farmland or natural areas.

These numbers remain virtually unchanged since 2006 and indicate a consistent and significant personal desire for convenient and safe transportation options including safe cycling.

GOVERNMENT

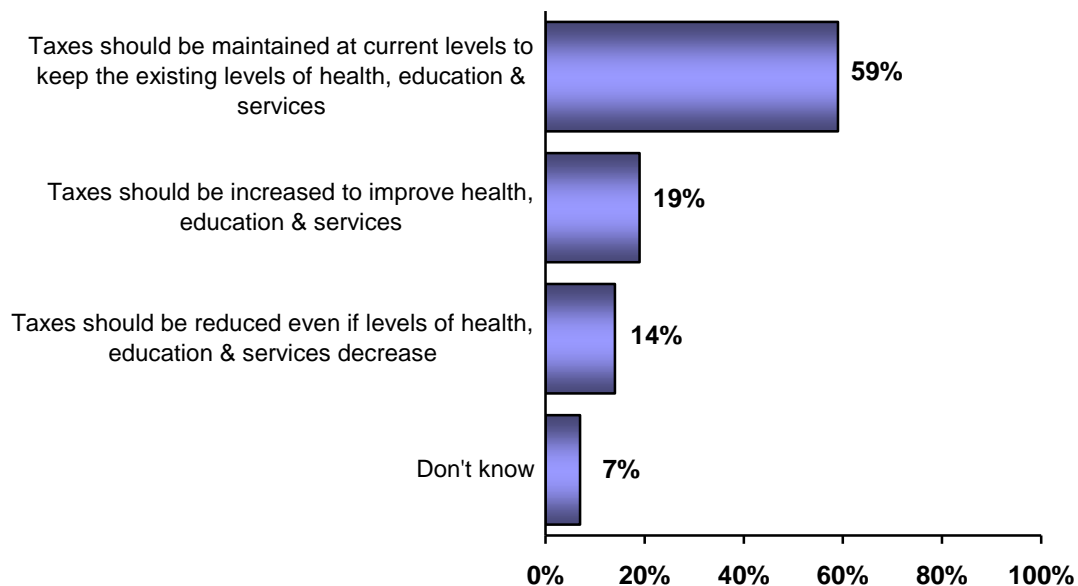
Respondents were asked which statements best reflected their view on the **role of government with respect to Ontario's future and on taxation in the province.**

“Which of the following statements most closely reflects your view of the role that the government of Ontario should have with respect to creating a strong future for Ontario?”



The majority of Ontarians favour some role for government in creating a strong future for Ontario. A total of 35% want a strong hands-on role and 30% one where government sets clear rules.

“Which of the following statements most closely reflects your view on taxation in Ontario?”



Almost six in ten or 59% are of the opinion that taxes should be maintained and a further 19% that they should be increased, while only 14% believe that they should be reduced.

Results by Question

GENERAL QUESTIONS

What is the most important issue facing the province of Ontario at this time?

	Percent
Economy	22
Health care	20
Jobs / employment	19
Don't know	10
Budget / defecits / debt	7
Environment	6
Rising prices (utilities, gas etc)	3
Social programs / social issues (poverty, welfare etc)	3
Education	2
Taxes / taxation	2
Energy / Alternative energy	2
Leadership / change	2
Immigration	1
Seniors issues	1
Total	100

VOTE INTENT

Vote intent

	Percent
PC	36
Liberal	33
Undecided	14
NDP	11
Green	6
Total	100

VOTE INTENT EXCLUDING UNDECIDED'S

Vote intent

	Percent
PC	42
Liberal	38
NDP	13
Green	7
Total	100

Do you feel that it is time for a change of provincial government in Ontario or should the provincial Liberals be re-elected to fulfill their vision of Ontario?

	Percent
Time for a change	49
Re-elect Liberals	30
Don't know	22
Total	100

IF TIME FOR A CHANGE ASK:

What do you most want to see changed in Ontario?

	Percent
Taxation / taxes	21
Don't know	21
Health care	13
Job creation / employment	11
Honesty / good government	7
Gas prices / rising utility costs	5
Environment	5
Education	5
Budget / defecits / debt	5
Leadership / change	3
Economy	2
Social programs	2
Total	100

CCO QUESTIONS

Please rate your level of concern with each of the following using a scale from one not at all concerned to five very concerned.

Q1. The state of the Ontario's economy

	Percent
Not at all concerned	2
Not concerned	14
Neither concerned nor not concerned	26
Concerned	30
Very concerned	27
Don't know	1
Total	100

Q2. The state of Ontario's environment

	Percent
Not at all concerned	6
Not concerned	10
Neither concerned nor not concerned	34
Concerned	23
Very concerned	27
Total	100

Q3. The cost of living including, food, energy, and housing

	Percent
Not at all concerned	3
Not concerned	8
Neither concerned nor not concerned	17
Concerned	29
Very concerned	43
Total	100

Q4. The quality of public education in Ontario

	Percent
Not at all concerned	9
Not concerned	8
Neither concerned nor not concerned	26
Concerned	30
Very concerned	20
Don't know	7
Total	100

Q5. The quality of public health and health care in Ontario

	Percent
Not at all concerned	4
Not concerned	8
Neither concerned nor not concerned	16
Concerned	28
Very concerned	43
Don't know	1
Total	100

Q6. Crime and public safety

	Percent
Not at all concerned	6
Not concerned	22
Neither concerned nor not concerned	30
Concerned	21
Very concerned	21
Don't know	1
Total	100

Q7. When thinking of the term conservation, what thought first comes to mind?

	Percent
Nature: Protecting Nature and biodiversity	29
Energy: Saving energy and green power	18
Other resources: saving natural resources (minerals, gravel, etc)	15
Don't know	11
Pollution: preventing pollution and waste	8
Farmland: saving farmland and promoting compact development	7
Lifestyle: living lightly (living better by using less / a c)	4
Economics / saving money	4
Environment (in general)	2
Water safety / preservatrion	2
Total	100

I will now read you a definition of conservation. Conservation is how we can balance our needs and desires as individuals and as a society with a respect for nature and the need to protect our future supplies of natural resources. Conservation is how we can live well while using less.

In your opinion, how important a role can conservation play in helping to achieve the following goals for Ontario? Please use a scale from one not at all important top five very important.

Q8. Ensuring a healthy economy

	Percent
Not at all important	3
Not important	2
Neither important nor not important	14
Important	30
Very important	48
Don't know	2
Total	100

Q9. Ensuring a healthy environment

	Percent
Not important	2
Neither important nor not important	10
Important	23
Very important	63
Don't know	1
Total	100

Q10. Lowering the cost of living including, food, energy, and housing

	Percent
Not at all important	5
Not important	6
Neither important nor not important	19
Important	29
Very important	38
Don't know	2
Total	100

Q11. Promoting public health and reducing health care costs in Ontario

	Percent
Not at all important	2
Not important	4
Neither important nor not important	24
Important	23
Very important	46
Don't know	2
Total	100

Q12. Promoting safe communities and reducing crime.

	Percent
Not at all important	10
Not important	16
Neither important nor not important	15
Important	26
Very important	30
Don't know	2
Total	100

Q13. How often would you say that you make an effort to conserve? Would you say that you:

	Percent
Make a conscious effort on a daily basis	65
Make an effort to conserve most of the time	26
Make an effort to conserve from time to time	10
Total	100

Please rate your level of agreement with the following statements using a scale from one strongly disagree to five strongly agree.

Q14. Conservation is important to me

	Percent
Strongly disagree	1
Disagree	1
Neither agree nor disagree	11
Agree	23
Strongly agree	64
Total	100

Q15. Overall, I feel that Ontarians need to do a better job of conserving energy

	Percent
Disagree	4
Neither agree nor disagree	15
Agree	26
Strongly agree	53
Don't know	2
Total	100

Q16. I am better at conserving than others

	Percent
Strongly disagree	3
Disagree	6
Neither agree nor disagree	32
Agree	38
Strongly agree	16
Don't know	6
Total	100

SECTION THREE: SPECIFIC ISSUES

ELECTRICITY

Q17. Overall, would you say that your home energy usage is above average, below average or about the same as other Ontarians?

	Percent
Above average	24
Below average	34
About the same	38
Don't know	4
Total	100

Q18. How many compact fluorescent or LED light bulbs do you have in your home?

	Percent
None	10
1 or 2	2
2 to 5	14
5 to 10	19
10 or more	54
Don't know	2
Total	100

Q19. Over the course of an entire year, do you use a clothesline to air dry laundry:

	Percent
All the time / almost all of the time	26
Occasionally / some of the time	26
Almost never / never	49
Total	100

Q20. What source do you find most trustworthy when it comes to information about electricity conservation issues?

	Percent
Media	42
Don't know	18
Local utility	14
Government agencies	8
Internet / website	6
Experts / scientists	6
Municipal councilors	5
None	2
Provincial politicians	1
Total	100

TRANSPORTATION

Q21. In a typical day, how much time do you spend commuting in a personal vehicle?

	Percent
Up to one hour	57
1-2 hours	13
None	10
None - I take public transit	8
2-3 hours	6
Don't know	4
3-4 hours	2
Total	100

Q22. Compared to five years ago, do you spend more time commuting in an average day, less time or about the same amount of time?

	Percent
More	10
Less	54
About the same	37
Total	100

How important are each of the following reasons that would encourage Ontarians like you to drive less or adopt alternatives that will help conserve gas. Please use a scale from one not important to five very important.

Q23. Saving money on gas

	Percent
Not at all important	3
Not important	5
Neither important nor not important	17
Important	13
Very important	59
Don't know	3
Total	100

**Q24. Having government incentives for driving alternatives
(such as fuel efficient vehicles or transit)**

	Percent
Not at all important	3
Not important	5
Neither important nor not important	15
Important	22
Very important	51
Don't know	4
Total	100

**Q25. Having convenient alternatives (such as transit, or
bike lanes)**

	Percent
Not at all important	6
Not important	6
Neither important nor not important	16
Important	23
Very important	45
Don't know	5
Total	100

Q26. Contributing to a greener and more efficient economy

	Percent
Not at all important	3
Not important	3
Neither important nor not important	18
Important	26
Very important	44
Don't know	5
Total	100

Q27. Helping to reduce the effects of climate change

	Percent
Not at all important	3
Not important	4
Neither important nor not important	20
Important	25
Very important	42
Don't know	6
Total	100

Q28. Helping to reduce smog and asthma

	Percent
Not at all important	2
Not important	2
Neither important nor not important	14
Important	24
Very important	54
Don't know	3
Total	100

FOOD

Q29. Please rank in order of priority each of the following motivators that would encourage Ontarians like you to buy locally grown food. (Food produced within 100 kilometers of your home)

Mean / Average score (1=lowest priority - 7=highest priority)

	Mean
Q29g. Lowering energy use and greenhouse gas emissions from imported food	4.8
Q29a. Food that tastes better	4.5
Q29e. Support for healthy farming practices (such as organic farming or free-range eggs),	4.3
Q29f. Protecting Ontario's best farmland from development	3.8
Q29c. Lower prices for local food	3.4
Q29b. Food that is healthier	3.4
Q29d. Support for local farmers	3.2

COMMUNITY

How important are each of the following aspects about living in a community to you. Please use a scale from one not at all important to five very important.

Q30. Being able to walk to local stores

	Percent
Not at all important	6
Not important	6
Neither important nor not important	11
Important	19
Very important	57
Total	100

Q31. Having friends and neighbours within easy walking distance

	Percent
Not at all important	8.0
Not important	12.0
Neither important nor not important	15.2
Important	22.4
Very important	42.4
Total	100.0

Q32. Living close enough to work or school that I can get there by walking, transit or cycling

	Percent
Not at all important	9.6
Not important	6.4
Neither important nor not important	12.0
Important	19.2
Very important	50.4
Don't know	2.4
Total	100.0

Q33. Having public green spaces such as parks for recreation in my neighbourhood

	Percent
Not at all important	3.2
Not important	1.6
Neither important nor not important	8.8
Important	22.4
Very important	63.2
Don't know	.8
Total	100.0

A complete community is defined as a neighbourhood-based community that has most everything you need within easy walking distance. It usually has a central area with shops, local businesses, playgrounds and community services, small parks and other green spaces, and lots of cycling and walking paths, all surrounded by a mix of smaller homes located fairly close together.

Q34. How closely does this definition describe the community where you live now?

	Percent
Not at all closely	14
Not closely	11
Neither closely nor not closely	14
Closely	25
Very closely	34
Don't know	1
Total	100

Q35. How closely does this definition describe the kind of community you would LIKE to live in? Please respond using a scale from one not at all to five very closely.

	Percent
Not at all closely	10
Not closely	7
Neither closely nor not closely	13
Closely	20
Very closely	48
Don't know	2
Total	100

Please rate your level of agreement with each of the following statements using a scale from one strongly disagree to five strongly agree.

Q36. I prefer to live in a bigger house with a large yard, even if that means that more farmland and natural areas has to be used up to support this lifestyle

	Percent
Strongly disagree	50
Disagree	24
Neither agree nor disagree	12
Agree	6
Strongly agree	5
Don't know	3
Total	100

Q37. I would drive less if there were other convenient, safe transportation options, like public transit or cycling.

	Percent
Strongly disagree	7
Disagree	13
Neither agree nor disagree	15
Agree	25
Strongly agree	30
Don't know	10
Total	100

Q38. I would ride my bike to work or school or shopping if there were safe bicycle routes and bicycle paths in my community

	Percent
Strongly disagree	14
Disagree	9
Neither agree nor disagree	18
Agree	21
Strongly agree	26
Don't know	12
Total	100

SECTION 4: GOOD GOVERNMENT

Q39. Which of the following statements most closely reflects your view of the role that the government of Ontario should have with respect to creating a strong future for Ontario

	Percent
Government should be smaller and play a limited role	12
Government should be a catalyst for voluntary change through price incentives & investments	16
Government needs to be more hands on by providing programs and services in order to support voluntary change	35
Government should set clear rules for development through legislation & standards	30
Don't know	7
Total	100

Q40. Which of the following statements most closely reflects your view on taxation in Ontario?

	Percent
Taxes should be increased to improve health, education & services	19
Taxes should be maintained at current levels to keep the existing levels of health, education & services	59
Taxes should be reduced even if levels of health, education & services decrease	14
Don't know	7
Total	100

SECTION 5: DEMOGRAPHICS

The remaining few questions are of a personal demographic nature and please be assured all individual responses will be kept in strict confidence.

D1. What type of dwelling do you live in?

	Percent
Detached, single-family home	70
A semi-detached or townhouse	15
A high-rise condominium or apartment building	14
Total	100

D2. Which of the following age categories may I place you in?

	Percent
18-34	19
35-54	43
55 and over	38
Total	100

D3. Finally, what is your combined family income?

	Percent
Under \$35,000	22
Under \$75,000	30
\$75,000 and over	49
Total	100

D4. Gender

	Percent
Male	47
Female	53
Total	100

C r o s s t a b u l a t i o n s

		Q1. The state of the Ontario's economy					
		Not at all concerned	Not concerned	Neither concerned nor not concerned	Concerned	Very concerned	Don't know
AREA	Central	8%		33%	17%	42%	
	Eastern	5%	14%	24%	14%	38%	5%
	Metro		5%	30%	40%	25%	
	GTA		6%	29%	29%	35%	
	Niagara / Hamilton		22%	9%	30%	39%	
	Southwest		24%	24%	48%	5%	
	North		27%	45%	27%		

		Q1. The state of the Ontario's economy					
		Not at all concerned	Not concerned	Neither concerned nor not concerned	Concerned	Very concerned	Don't know
Vote intent	Liberal	3%	13%	23%	35%	25%	3%
	PC		16%	23%	34%	27%	
	NDP	7%	7%	21%	14%	50%	
	Green		29%	43%	14%	14%	

		Q1. The state of the Ontario's economy					
		Not at all concerned	Not concerned	Neither concerned nor not concerned	Concerned	Very concerned	Don't know
D1. What type of dwelling do you live in?	Detached, single-family home	1%	11%	24%	34%	28%	1%
	A semi-detached or townhouse		32%	32%	21%	16%	
	A high-rise condominium or apartment building	6%	11%	28%	22%	33%	

		Q1. The state of the Ontario's economy					
		Not at all concerned	Not concerned	Neither concerned nor not concerned	Concerned	Very concerned	Don't know
D2. Which of the following age categories may I place you in?	18-34		33%	25%	21%	21%	
	35-54	2%	17%	20%	31%	28%	2%
	55 and over	2%	2%	32%	34%	30%	

		Q1. The state of the Ontario's economy					
		Not at all concerned	Not concerned	Neither concerned nor not concerned	Concerned	Very concerned	Don't know
D3. Finally, what is your combined family income?	Under \$35,000	4%	9%	26%	26%	35%	3%
	Under \$75,000		16%	26%	35%	19%	
	\$75,000 and over	2%	16%	24%	29%	29%	

		Q1. The state of the Ontario's economy					
		Not at all concerned	Not concerned	Neither concerned nor not concerned	Concerned	Very concerned	Don't know
D4. Gender	Male	2%	17%	25%	27%	29%	2%
	Female	2%	12%	26%	33%	26%	

		Q2. The state of Ontario's environment				
		Not at all concerned	Not concerned	Neither concerned nor not concerned	Concerned	Very concerned
AREA	Central	8%		33%	17%	42%
	Eastern	10%	10%	33%	24%	24%
	Metro	5%	15%	40%	25%	15%
	GTA	6%	6%	24%	29%	35%
	Niagara / Hamilton	4%	4%	43%	17%	30%
	Southwest	5%	19%	38%	14%	24%
	North		9%	18%	45%	27%

Vote intent * Q2. The state of Ontario's environment Crosstabulation

		Q2. The state of Ontario's environment				
		Not at all concerned	Not concerned	Neither concerned nor not concerned	Concerned	Very concerned
Vote intent	Liberal		10%	38%	30%	23%
	PC	14%	9%	32%	18%	27%
	NDP		14%	14%	21%	50%
	Green		14%	43%	43%	

		Q2. The state of Ontario's environment				
		Not at all concerned	Not concerned	Neither concerned nor not concerned	Concerned	Very concerned
D1. What type of dwelling do you live in?	Detached, single-family home	7%	7%	34%	22%	31%
	A semi-detached or townhouse		26%	32%	37%	5%
	A high-rise condominium or apartment building	6%	6%	39%	17%	33%

		Q2. The state of Ontario's environment				
		Not at all concerned	Not concerned	Neither concerned nor not concerned	Concerned	Very concerned
D2. Which of the following age categories may I place you in?	18-34	13%	17%	33%	21%	17%
	35-54	6%	9%	30%	24%	31%
	55 and over	2%	6%	40%	23%	28%

		Q2. The state of Ontario's environment				
		Not at all concerned	Not concerned	Neither concerned nor not concerned	Concerned	Very concerned
D3. Finally, what is your combined family income?	Under \$35,000		4%	22%	22%	52%
	Under \$75,000	6%	16%	35%	23%	19%
	\$75,000 and over	8%	10%	37%	24%	22%

		Q2. The state of Ontario's environment				
		Not at all concerned	Not concerned	Neither concerned nor not concerned	Concerned	Very concerned
D4. Gender	Male	7%	12%	39%	22%	20%
	Female	5%	8%	30%	24%	33%

		Q3. The cost of living including, food, energy, and housing				
		Not at all concerned	Not concerned	Neither concerned nor not concerned	Concerned	Very concerned
AREA	Central			8.3%	41.7%	50.0%
	Eastern		5%	14%	24%	57%
	Metro	5%	5%	40%	20%	30%
	GTA	6%		6%	47%	41%
	Niagara / Hamilton	9%		9%	26%	57%
	Southwest		24%	19%	29%	29%
	North		27%	18%	18%	36%

		Q3. The cost of living including, food, energy, and housing				
		Not at all concerned	Not concerned	Neither concerned nor not concerned	Concerned	Very concerned
Vote intent	Liberal	3%	10%	15%	43%	30%
	PC	7%	2%	14%	25%	52%
	NDP		14%	14%	14%	57%
	Green			14%	71%	14%

		Q3. The cost of living including, food, energy, and housing				
		Not at all concerned	Not concerned	Neither concerned nor not concerned	Concerned	Very concerned
D1. What type of dwelling do you live in?	Detached, single-family home	3%	8%	17%	24%	48%
	A semi-detached or townhouse	5%	5%	16%	53%	21%
	A high-rise condominium or apartment building		11%	17%	28%	44%

		Q3. The cost of living including, food, energy, and housing				
		Not at all concerned	Not concerned	Neither concerned nor not concerned	Concerned	Very concerned
D2. Which of the following age categories may I place you in?	18-34	8%	13%	21%	25%	33%
	35-54	2%	6%	13%	31%	48%
	55 and over	2%	9%	19%	28%	43%

		Q3. The cost of living including, food, energy, and housing				
		Not at all concerned	Not concerned	Neither concerned nor not concerned	Concerned	Very concerned
D3. Finally, what is your combined family income?	Under \$35,000	4%	4%	9%	13%	70%
	Under \$75,000		10%	26%	45%	19%
	\$75,000 and over	6%	8%	16%	29%	41%

		Q3. The cost of living including, food, energy, and housing				
		Not at all concerned	Not concerned	Neither concerned nor not concerned	Concerned	Very concerned
D4.Gender	Male	5%	10%	19%	31%	36%
	Female	2%	6%	15%	27%	50%

		Q4. The quality of public education in Ontario					
		Not at all concerned	Not concerned	Neither concerned nor not concerned	Concerned	Very concerned	Don't know
AREA	Central			25%	33%	33%	8%
	Eastern	10%	10%	24%	19%	24%	14%
	Metro	5%	10%	20%	45%	20%	
	GTA		6%	18%	41%	29%	6%
	Niagara / Hamilton	22%	4%	35%	13%	13%	13%
	Southwest	14%	19%	29%	29%	5%	5%
	North			36%	36%	27%	

		Q4. The quality of public education in Ontario					
		Not at all concerned	Not concerned	Neither concerned nor not concerned	Concerned	Very concerned	Don't know
Vote intent	Liberal	10%	8%	23%	33%	20%	8%
	PC	14%	9%	25%	34%	14%	5%
	NDP	7%	7%	29%	14%	43%	
	Green			43%	14%	43%	

		Q4. The quality of public education in Ontario					
		Not at all concerned	Not concerned	Neither concerned nor not concerned	Concerned	Very concerned	Don't know
D1. What type of dwelling do you live in?	Detached, single-family home	10%	8%	26%	26%	20%	9%
	A semi-detached or townhouse	5%	11%	32%	42%	5%	5%
	A high-rise condominium or apartment building	6%	6%	22%	33%	33%	

		Q4. The quality of public education in Ontario					
		Not at all concerned	Not concerned	Neither concerned nor not concerned	Concerned	Very concerned	Don't know
D2. Which of the following age categories may I place you in?	18-34	13%	8%	38%	29%	13%	
	35-54	9%	4%	28%	30%	26%	4%
	55 and over	6%	13%	19%	30%	17%	15%

		Q4. The quality of public education in Ontario					
		Not at all concerned	Not concerned	Neither concerned nor not concerned	Concerned	Very concerned	Don't know
D3. Finally, what is your combined family income?	Under \$35,000	4%	4%	13%	17%	43%	17%
	Under \$75,000	6%	13%	32%	32%	16%	
	\$75,000 and over	12%	6%	29%	33%	18%	2%

		Q4. The quality of public education in Ontario					
		Not at all concerned	Not concerned	Neither concerned nor not concerned	Concerned	Very concerned	Don't know
D4.Gender	Male	7%	10%	31%	32%	12%	8%
	Female	11%	6%	23%	27%	27%	6%

		Q5. The quality of public health and health care in Ontario					
		Not at all concerned	Not concerned	Neither concerned nor not concerned	Concerned	Very concerned	Don't know
AREA	Central			33%	25%	42%	
	Eastern	5%		14%	38%	43%	
	Metro	5%	15%		40%	40%	
	GTA		12%	18%	29%	41%	
	Niagara / Hamilton	9%	9%	9%	4%	70%	
	Southwest	5%	10%	29%	29%	24%	5%
	North		9%	18%	36%	36%	

		Q5. The quality of public health and health care in Ontario				
		Not at all concerned	Not concerned	Neither concerned nor not concerned	Concerned	Very concerned
Vote intent	Liberal	3%	8%	20%	30%	40%
	PC	9%	9%	14%	25%	43%
	NDP		7%	21%	21%	50%
	Green			14%	43%	43%

		Q5. The quality of public health and health care in Ontario					
		Not at all concerned	Not concerned	Neither concerned nor not concerned	Concerned	Very concerned	Don't know
D1. What type of dwelling do you live in?	Detached, single-family home	5%	6%	17%	26%	45%	1%
	A semi-detached or townhouse	5%	16%	26%	21%	32%	
	A high-rise condominium or apartment building		11%		44%	44%	

		Q5. The quality of public health and health care in Ontario					
		Not at all concerned	Not concerned	Neither concerned nor not concerned	Concerned	Very concerned	Don't know
D2. Which of the following age categories may I place you in?	18-34	13%	8%	21%	42%	17%	
	35-54	2%	4%	17%	19%	59%	
	55 and over	2%	13%	13%	32%	38%	2%

		Q5. The quality of public health and health care in Ontario					
		Not at all concerned	Not concerned	Neither concerned nor not concerned	Concerned	Very concerned	Don't know
D3. Finally, what is your combined family income?	Under \$35,000	4%	9%		39%	43%	4%
	Under \$75,000		13%	23%	29%	35%	
	\$75,000 and over	6%		18%	25%	51%	

		Q5. The quality of public health and health care in Ontario					
		Not at all concerned	Not concerned	Neither concerned nor not concerned	Concerned	Very concerned	Don't know
D4. Gender	Male	7%	12%	19%	24%	37%	2%
	Female	2%	5%	14%	32%	48%	

		Q6. Crime and public safety					
		Not at all concerned	Not concerned	Neither concerned nor not concerned	Concerned	Very concerned	Don't know
AREA	Central	8%	17%	42%	17%	17%	4%
	Eastern	10%	24%	33%	10%	24%	
	Metro	5%	25%	35%	15%	20%	
	GTA	6%	29%	6%	24%	35%	
	Niagara / Hamilton	4%	9%	30%	30%	22%	
	Southwest	5%	29%	29%	29%	10%	
	North		27%	36%	18%	18%	

		Q6. Crime and public safety				
		Not at all concerned	Not concerned	Neither concerned nor not concerned	Concerned	Very concerned
Vote intent	Liberal	5%	35%	30%	15%	15%
	PC	2%	18%	27%	30%	23%
	NDP	14%	14%	29%	7%	36%
	Green		14%	71%	14%	

		Q6. Crime and public safety					
		Not at all concerned	Not concerned	Neither concerned nor not concerned	Concerned	Very concerned	Don't know
D1. What type of dwelling do you live in?	Detached, single-family home	5%	16%	28%	25%	25%	1%
	A semi-detached or townhouse	5%	47%	37%	11%		
	A high-rise condominium or apartment building	11%	28%	28%	11%	22%	

		Q6. Crime and public safety					
		Not at all concerned	Not concerned	Neither concerned nor not concerned	Concerned	Very concerned	Don't know
D2. Which of the following age categories may I place you in?	18-34	13%	33%	38%	17%		
	35-54	6%	19%	24%	22%	30%	
	55 and over	2%	21%	32%	21%	21%	2%

		Q6. Crime and public safety					
		Not at all concerned	Not concerned	Neither concerned nor not concerned	Concerned	Very concerned	Don't know
D3. Finally, what is your combined family income?	Under \$35,000	9%	9%	30%	9%	39%	4%
	Under \$75,000	6%	35%	42%	16%		
	\$75,000 and over	6%	20%	24%	31%	20%	

		Q6. Crime and public safety					
		Not at all concerned	Not concerned	Neither concerned nor not concerned	Concerned	Very concerned	Don't know
D4.Gender	Male	10%	24%	29%	24%	14%	
	Female	2%	21%	30%	18%	27%	2%

		Q8. Ensuring a healthy economy					
		Not at all important	Not important	Neither important nor not important	Important	Very important	Don't know
AREA	Central	8%	8%	17%	8%	58%	5%
	Eastern			19%	29%	52%	
	Metro	5%	5%	10%	50%	25%	
	GTA	6%		18%	12%	65%	
	Niagara / Hamilton			17%	22%	61%	5%
	Southwest	5%		10%	52%	29%	
	North		9%	9%	27%	55%	

		Q8. Ensuring a healthy economy					
		Not at all important	Not important	Neither important nor not important	Important	Very important	Don't know
Vote intent	Liberal	5%		15%	48%	30%	3%
	PC	2%		18%	23%	57%	
	NDP		7%	7%	7%	79%	
	Green	14%	14%	14%	14%	43%	

		Q8. Ensuring a healthy economy					
		Not at all important	Not important	Neither important nor not important	Important	Very important	Don't know
D1. What type of dwelling do you live in?	Detached, single-family home	3%	2%	13%	33%	48%	1%
	A semi-detached or townhouse		5%	32%	26%	37%	
	A high-rise condominium or apartment building	6%		6%	22%	61%	6%

		Q8. Ensuring a healthy economy					
		Not at all important	Not important	Neither important nor not important	Important	Very important	Don't know
D2. Which of the following age categories may I place you in?	18-34	4%		13%	29%	54%	4%
	35-54	2%	6%	17%	30%	43%	
	55 and over	4%		13%	32%	51%	

		Q8. Ensuring a healthy economy					
		Not at all important	Not important	Neither important nor not important	Important	Very important	Don't know
D3. Finally, what is your combined family income?	Under \$35,000	9%		4%	17%	65%	4%
	Under \$75,000		3%	26%	32%	39%	
	\$75,000 and over	4%	2%	10%	39%	43%	2%

		Q8. Ensuring a healthy economy					
		Not at all important	Not important	Neither important nor not important	Important	Very important	Don't know
D4. Gender	Male	5%	3%	19%	29%	44%	
	Female	2%	2%	11%	32%	52%	3%

		Q9. Ensuring a healthy environment				
		Not important	Neither important nor not important	Important	Very important	Don't know
AREA	Central		8%	25%	67%	6%
	Eastern		10%	10%	81%	
	Metro		15%	35%	50%	
	GTA		6%	12%	76%	
	Niagara / Hamilton		17%	30%	52%	
	Southwest	10%	5%	33%	52%	
	North	9%	9%	9%	73%	

		Q9. Ensuring a healthy environment			
		Not important	Neither important nor not important	Important	Very important
Vote intent	Liberal	5%	10%	25%	60%
	PC		14%	30%	57%
	NDP	7%			93%
	Green			14%	86%

		Q9. Ensuring a healthy environment				
		Not important	Neither important nor not important	Important	Very important	Don't know
D1. What type of dwelling do you live in?	Detached, single-family home	3%	13%	25%	58%	1%
	A semi-detached or townhouse		5%	32%	63%	
	A high-rise condominium or apartment building		6%	6%	89%	

		Q9. Ensuring a healthy environment				
		Not important	Neither important nor not important	Important	Very important	Don't know
D2. Which of the following age categories may I place you in?	18-34		4%	25%	71%	
	35-54	4%	11%	26%	59%	
	55 and over	2%	13%	19%	64%	2%

		Q9. Ensuring a healthy environment			
		Not important	Neither important nor not important	Important	Very important
D3. Finally, what is your combined family income?	Under \$35,000			17%	83%
	Under \$75,000	6%	16%	16%	61%
	\$75,000 and over	2%	6%	27%	65%

		Q9. Ensuring a healthy environment				
		Not important	Neither important nor not important	Important	Very important	Don't know
D4. Gender	Male	5%	14%	27%	54%	
	Female		8%	20%	71%	2%

		Q10. Lowering the cost of living including, food, energy, and housing					
		Not at all important	Not important	Neither important nor not important	Important	Very important	Don't know
AREA	Central			25%	17%	50%	8%
	Eastern			19%	24%	57%	
	Metro	15%	15%	30%	30%	10%	
	GTA	6%	12%	12%	29%	35%	6%
	Niagara / Hamilton	4%		9%	22%	61%	4%
	Southwest		10%	29%	38%	24%	
	North	9%	9%	9%	45%	27%	

		Q10. Lowering the cost of living including, food, energy, and housing					
		Not at all important	Not important	Neither important nor not important	Important	Very important	Don't know
Vote intent	Liberal	8%	10%	28%	28%	25%	3%
	PC		5%	14%	30%	52%	
	NDP		14%	7%	21%	57%	
	Green	14%		29%	57%		

		Q10. Lowering the cost of living including, food, energy, and housing					
		Not at all important	Not important	Neither important nor not important	Important	Very important	Don't know
D1. What type of dwelling do you live in?	Detached, single-family home	2%	6%	19%	26%	43%	3%
	A semi-detached or townhouse	16%	5%	26%	37%	16%	
	A high-rise condominium or apartment building	6%	11%	11%	33%	39%	

		Q10. Lowering the cost of living including, food, energy, and housing					
		Not at all important	Not important	Neither important nor not important	Important	Very important	Don't know
D2. Which of the following age categories may I place you in?	18-34	4%	8%	8%	42%	38%	
	35-54	7%	6%	20%	30%	37%	
	55 and over	2%	6%	23%	21%	40%	6%

		Q10. Lowering the cost of living including, food, energy, and housing					
		Not at all important	Not important	Neither important nor not important	Important	Very important	Don't know
D3. Finally, what is your combined family income?	Under \$35,000	4%	4%	22%	17%	48%	4%
	Under \$75,000	3%	10%	32%	32%	23%	
	\$75,000 and over	6%	6%	14%	39%	33%	2%

		Q10. Lowering the cost of living including, food, energy, and housing					
		Not at all important	Not important	Neither important nor not important	Important	Very important	Don't know
D4.Gender	Male	8%	10%	17%	25%	39%	
	Female	2%	3%	21%	32%	38%	5%

		Q11. Promoting public health and reducing health care costs in Ontario					
		Not at all important	Not important	Neither important nor not important	Important	Very important	Don't know
AREA	Central			25%	8%	67%	
	Eastern			29%	19%	52%	
	Metro	5%	5%	35%	30%	20%	5%
	GTA		12%	12%	24%	47%	6%
	Niagara / Hamilton		4%	13%	17%	65%	
	Southwest	5%		33%	29%	33%	
	North		9%	18%	36%	36%	

		Q11. Promoting public health and reducing health care costs				
		Not at all important	Not important	Neither important nor not important	Important	Very important
Vote intent	Liberal	3%	8%	25%	23%	43%
	PC		5%	20%	23%	52%
	NDP			14%	29%	57%
	Green	14%		43%	14%	29%

		Q11. Promoting public health and reducing health care costs in Ontario					
		Not at all important	Not important	Neither important nor not important	Important	Very important	Don't know
D1. What type of dwelling do you live in?	Detached, single-family home	1%	3%	23%	22%	50%	1%
	A semi-detached or townhouse		11%	32%	32%	26%	
	A high-rise condominium or apartment building	6%		22%	22%	44%	6%

		Q11. Promoting public health and reducing health care costs in Ontario					
		Not at all important	Not important	Neither important nor not important	Important	Very important	Don't know
D2. Which of the following age categories may I place you in?	18-34		4%	38%	33%	25%	
	35-54	2%	4%	24%	19%	52%	
	55 and over	2%	4%	17%	23%	49%	4%

		Q11. Promoting public health and reducing health care costs in Ontario					
		Not at all important	Not important	Neither important nor not important	Important	Very important	Don't know
D3. Finally, what is your combined family income?	Under \$35,000	4%		13%	26%	57%	
	Under \$75,000	3%	3%	32%	26%	32%	3%
	\$75,000 and over		4%	29%	22%	45%	

		Q11. Promoting public health and reducing health care costs in Ontario					
		Not at all important	Not important	Neither important nor not important	Important	Very important	Don't know
D4.Gender	Male	2%	7%	25%	25%	41%	
	Female	2%	2%	23%	21%	50%	3%

		Q12. Promoting safe communities and reducing crime.					
		Not at all important	Not important	Neither important nor not important	Important	Very important	Don't know
AREA	Central	17%		8%	42%	33%	
	Eastern	5%	19%	14%	14%	48%	
	Metro	15%	5%	25%	35%	10%	10%
	GTA	6%	12%	18%	18%	41%	6%
	Niagara / Hamilton	9%	17%	13%	22%	39%	
	Southwest	14%	33%	10%	33%	10%	
	North	9%	18%	18%	18%	36%	

		Q12. Promoting safe communities and reducing crime.				
		Not at all important	Not important	Neither important nor not important	Important	Very important
Vote intent	Liberal	15%	23%	23%	23%	18%
	PC	2%	14%	5%	43%	36%
	NDP	14%	14%	14%	14%	43%
	Green	29%	14%	29%		29%

		Q12. Promoting safe communities and reducing crime.					
		Not at all important	Not important	Neither important nor not important	Important	Very important	Don't know
D1. What type of dwelling do you live in?	Detached, single-family home	8%	14%	14%	28%	35%	1%
	A semi-detached or townhouse	21%	11%	26%	26%	11%	5%
	A high-rise condominium or apartment building	11%	33%	11%	11%	28%	6%

		Q12. Promoting safe communities and reducing crime.					
		Not at all important	Not important	Neither important nor not important	Important	Very important	Don't know
D2. Which of the following age categories may I place you in?	18-34	13%	21%	21%	33%	13%	
	35-54	17%	9%	15%	24%	35%	
	55 and over	2%	21%	13%	23%	34%	6%

		Q12. Promoting safe communities and reducing crime.					
		Not at all important	Not important	Neither important nor not important	Important	Very important	Don't know
D3. Finally, what is your combined family income?	Under \$35,000	4%	9%	9%	26%	52%	3%
	Under \$75,000	16%	16%	29%	26%	10%	
	\$75,000 and over	10%	24%	16%	24%	27%	

		Q12. Promoting safe communities and reducing crime.					
		Not at all important	Not important	Neither important nor not important	Important	Very important	Don't know
D4.Gender	Male	14%	19%	15%	24%	27%	2%
	Female	8%	14%	15%	27%	33%	3%

		Q13. How often would you say that you make an effort to conserve? Would you say that you:		
		Make a conscious effort on a daily basis	Make an effort to conserve most of the time	Make an effort to conserve from time to time
AREA	Central	66.7%	25.0%	8.3%
	Eastern	52.4%	38.1%	9.5%
	Metro	55.0%	25.0%	20.0%
	GTA	70.6%	23.5%	5.9%
	Niagara / Hamilton	56.5%	34.8%	8.7%
	Southwest	85.7%	4.8%	9.5%
	North	72.7%	27.3%	

		Q13. How often would you say that you make an effort to conserve? Would you say that you:		
		Make a conscious effort on a daily basis	Make an effort to conserve most of the time	Make an effort to conserve from time to time
Vote intent	Liberal	70.0%	20.0%	10.0%
	PC	61.4%	31.8%	6.8%
	NDP	50.0%	42.9%	7.1%
	Green	71.4%	14.3%	14.3%

		Q13. How often would you say that you make an effort to conserve? Would you say that you:		
		Make a conscious effort on a daily basis	Make an effort to conserve most of the time	Make an effort to conserve from time to time
D1. What type of dwelling do you live in?	Detached, single-family home	65.9%	25.0%	9.1%
	A semi-detached or townhouse	68.4%	21.1%	10.5%
	A high-rise condominium or apartment building	55.6%	33.3%	11.1%

	Q13. How often would you say that you make an effort to conserve? Would you say that you:		
	Make a conscious effort on a daily basis	Make an effort to conserve most of the time	Make an effort to conserve from time to time
D2. Which of the following age categories may I place you in?	50.0%	41.7%	8.3%
18-34	68.5%	20.4%	11.1%
35-54	68.1%	23.4%	8.5%
55 and over			

	Q13. How often would you say that you make an effort to conserve? Would you say that you:		
	Make a conscious effort on a daily basis	Make an effort to conserve most of the time	Make an effort to conserve from time to time
D3. Finally, what is your combined family income?	69.6%	21.7%	8.7%
Under \$35,000	48.4%	35.5%	16.1%
Under \$75,000	70.6%	23.5%	5.9%
\$75,000 and over			

	Q13. How often would you say that you make an effort to conserve? Would you say that you:		
	Make a conscious effort on a daily basis	Make an effort to conserve most of the time	Make an effort to conserve from time to time
D4. Gender Male	66.1%	23.7%	10.2%
Female	63.6%	27.3%	9.1%

		Q14. Conservation is important to me				
		Strongly disagree	Disagree	Neither agree nor disagree	Agree	Strongly agree
AREA	Central	8.3%		8.3%	25.0%	58.3%
	Eastern		4.8%	9.5%	23.8%	61.9%
	Metro			10.0%	40.0%	50.0%
	GTA			5.9%	17.6%	76.5%
	Niagara / Hamilton			13.0%	8.7%	78.3%
	Southwest			19.0%	28.6%	52.4%
	North			9.1%	18.2%	72.7%

		Q14. Conservation is important to me			
		Strongly disagree	Neither agree nor disagree	Agree	Strongly agree
Vote intent	Liberal	3%	10%	30%	58%
	PC		9%	20%	70%
	NDP		7%	14%	79%
	Green		14%	14%	71%

		Q14. Conservation is important to me				
		Strongly disagree	Disagree	Neither agree nor disagree	Agree	Strongly agree
D1. What type of dwelling do you live in?	Detached, single-family home	1%	1%	15%	23%	60%
	A semi-detached or townhouse			5%	37%	58%
	A high-rise condominium or apartment building				11%	89%

		Q14. Conservation is important to me				
		Strongly disagree	Disagree	Neither agree nor disagree	Agree	Strongly agree
D2. Which of the following age categories may I place you in?	18-34			8%	25%	67%
	35-54			13%	20%	67%
	55 and over	2%	2%	11%	26%	60%

		Q14. Conservation is important to me				
		Strongly disagree	Disagree	Neither agree nor disagree	Agree	Strongly agree
D3. Finally, what is your combined family income?	Under \$35,000	4%			22%	74%
	Under \$75,000		3%	16%	23%	58%
	\$75,000 and over			14%	20%	67%

		Q14. Conservation is important to me				
		Strongly disagree	Disagree	Neither agree nor disagree	Agree	Strongly agree
D4. Gender	Male	2%		12%	25%	61%
	Female		2%	11%	21%	67%

		Q15. Overall, I feel that Ontarians need to do a better job of conserving energy				
		Disagree	Neither agree nor disagree	Agree	Strongly agree	Don't know
AREA	Central	8%	8%	17%	67%	9%
	Eastern	5%	14%	24%	57%	
	Metro	5%	30%	35%	30%	
	GTA	6%	6%	18%	71%	
	Niagara / Hamilton		26%	9%	57%	
	Southwest	5%	5%	52%	38%	
	North		9%	27%	64%	

		Q15. Overall, I feel that Ontarians need to do a better job of conserving energy				
		Disagree	Neither agree nor disagree	Agree	Strongly agree	Don't know
Vote intent	Liberal		13%	25%	58%	5%
	PC	7%	16%	27%	50%	
	NDP		7%	14%	79%	
	Green	14%	14%	14%	57%	

		Q15. Overall, I feel that Ontarians need to do a better job of conserving energy				
		Disagree	Neither agree nor disagree	Agree	Strongly agree	Don't know
D1. What type of dwelling do you live in?	Detached, single-family home	5%	19%	26%	48%	2%
	A semi-detached or townhouse		5%	26%	68%	
	A high-rise condominium or apartment building	6%	6%	28%	61%	

		Q15. Overall, I feel that Ontarians need to do a better job of conserving energy				
		Disagree	Neither agree nor disagree	Agree	Strongly agree	Don't know
D2. Which of the following age categories may I place you in?	18-34	4%	8%	38%	50%	4%
	35-54	4%	11%	20%	61%	
	55 and over	4%	23%	28%	45%	

		Q15. Overall, I feel that Ontarians need to do a better job of conserving energy				
		Disagree	Neither agree nor disagree	Agree	Strongly agree	Don't know
D3. Finally, what is your combined family income?	Under \$35,000	4%	4%	22%	70%	
	Under \$75,000	6%	16%	32%	45%	
	\$75,000 and over		14%	29%	53%	4%

		Q15. Overall, I feel that Ontarians need to do a better job of conserving energy				
		Disagree	Neither agree nor disagree	Agree	Strongly agree	Don't know
D4. Gender	Male	3%	20%	27%	49%	
	Female	5%	11%	26%	56%	3%

		Q16. I am better at conserving than others					
		Strongly disagree	Disagree	Neither agree nor disagree	Agree	Strongly agree	Don't know
AREA	Central	8%		50%	25%	8%	8%
	Eastern	5%		33%	29%	29%	5%
	Metro	5%	5%	35%	30%	10%	15%
	GTA		29%	6%	35%	24%	6%
	Niagara / Hamilton		4%	30%	52%	13%	
	Southwest	5%		38%	43%	10%	5%
	North			36%	45%	18%	

		Q16. I am better at conserving than others					
		Strongly disagree	Disagree	Neither agree nor disagree	Agree	Strongly agree	Don't know
Vote intent	Liberal	3%	3%	33%	33%	25%	5%
	PC	2%	7%	32%	48%	11%	
	NDP	7%	7%	43%	14%	7%	21%
	Green		14%	29%	43%	14%	

		Q16. I am better at conserving than others					
		Strongly disagree	Disagree	Neither agree nor disagree	Agree	Strongly agree	Don't know
D1. What type of dwelling do you live in?	Detached, single-family home	3%	5%	34%	38%	17%	3%
	A semi-detached or townhouse	5%	5%	26%	32%	21%	11%
	A high-rise condominium or apartment building		11%	28%	44%	6%	11%

		Q16. I am better at conserving than others					
		Strongly disagree	Disagree	Neither agree nor disagree	Agree	Strongly agree	Don't know
D2. Which of the following age categories may I place you in?	18-34	8%	8%	25%	50%	8%	
	35-54	2%	4%	35%	35%	20%	4%
	55 and over	2%	6%	32%	34%	15%	11%

		Q16. I am better at conserving than others					
		Strongly disagree	Disagree	Neither agree nor disagree	Agree	Strongly agree	Don't know
D3. Finally, what is your combined family income?	Under \$35,000		4%	30%	17%	30%	17%
	Under \$75,000	6%		58%	23%	10%	3%
	\$75,000 and over	2%	10%	25%	47%	14%	2%

	Q16. I am better at conserving than others					
	Strongly disagree	Disagree	Neither agree nor disagree	Agree	Strongly agree	Don't know
D4.Gender Male	5%	7%	31%	39%	14%	5%
Female	2%	5%	33%	36%	18%	6%

		Q17. Overall, would you say that your home energy usage is above average, below average or about the same as other Ontarians?			
		Above average	Below average	About the same	Don't know
AREA	Central	42%	33%	25%	
	Eastern	14%	33%	48%	5%
	Metro	25%	35%	30%	10%
	GTA	24%	41%	29%	6%
	Niagara / Hamilton	26%	30%	43%	
	Southwest	19%	48%	29%	5%
	North	27%	9%	64%	

		Q17. Overall, would you say that your home energy usage is above average, below average or about the same as other Ontarians?			
		Above average	Below average	About the same	Don't know
Vote intent	Liberal	18%	53%	25%	5%
	PC	32%	25%	18%	
	NDP	7%	36%	50%	7%
	Green	14%	29%	43%	14%

		Q17. Overall, would you say that your home energy usage is above average, below average or about the same as other Ontarians?			
		Above average	Below average	About the same	Don't know
D1. What type of dwelling do you live in?	Detached, single-family home	28%	32%	35%	5%
	A semi-detached or townhouse	11%	58%	26%	5%
	A high-rise condominium or apartment building	17%	22%	61%	

		Q17. Overall, would you say that your home energy usage is above average, below average or about the same as other Ontarians?			
		Above average	Below average	About the same	Don't know
D2. Which of the following age categories may I place you in?	18-34	21%	17%	63%	
	35-54	26%	44%	28%	2%
	55 and over	23%	32%	36%	9%

		Q17. Overall, would you say that your home energy usage is above average, below average or about the same as other Ontarians?			
		Above average	Below average	About the same	Don't know
D3. Finally, what is your combined family income?	Under \$35,000	30%	26%	39%	4%
	Under \$75,000	6%	55%	32%	6%
	\$75,000 and over	27%	31%	39%	2%

		Q17. Overall, would you say that your home energy usage is above average, below average or about the same as other Ontarians?			
		Above average	Below average	About the same	Don't know
D4. Gender	Male	29%	37%	27%	7%
	Female	20%	32%	47%	2%

		Q18. How many compact fluorescent or LED light bulbs do you have in your home?					
		None	1 or 2	2 to 5	5 to 10	10 or more	Don't know
AREA	Central				8%	92%	
	Eastern		5%	10%	33%	52%	
	Metro	30%		25%	30%	15%	
	GTA	12%		35%	6%	41%	6%
	Niagara / Hamilton	9%	4%	9%	22%	57%	
	Southwest	5%		5%	14%	71%	5%
	North	18%		9%	9%	64%	

		Q18. How many compact fluorescent or LED light bulbs do you have in your home?					
		None	1 or 2	2 to 5	5 to 10	10 or more	Don't know
Vote intent	Liberal	10%		20%	18%	53%	
	PC	7%		5%	23%	64%	2%
	NDP	14%		14%	21%	43%	7%
	Green	29%		29%	14%	29%	
	Don't know / Undecided	6%	6%	18%	12%	59%	

		Q18. How many compact fluorescent or LED light bulbs do you have in your home?					
		None	1 or 2	2 to 5	5 to 10	10 or more	Don't know
D1. What type of dwelling do you live in?	Detached, single-family home	8%	2%	6%	17%	66%	1%
	A semi-detached or townhouse	16%		26%	16%	37%	5%
	A high-rise condominium or apartment building	17%		39%	33%	11%	

		Q18. How many compact fluorescent or LED light bulbs do you have in your home?					
		None	1 or 2	2 to 5	5 to 10	10 or more	Don't know
D2. Which of the following age categories may I place you in?	18-34	4%		17%	4%	71%	4%
	35-54	9%		9%	28%	52%	2%
	55 and over	15%	4%	17%	17%	47%	

		Q18. How many compact fluorescent or LED light bulbs do you have in your home?					
		None	1 or 2	2 to 5	5 to 10	10 or more	Don't know
D3. Finally, what is your combined family income?	Under \$35,000	30%	4%	22%	22%	22%	
	Under \$75,000	19%		13%	19%	45%	3%
	\$75,000 and over			12%	20%	67%	2%

		Q18. How many compact fluorescent or LED light bulbs do you have in your home?					
		None	1 or 2	2 to 5	5 to 10	10 or more	Don't know
D4. Gender	Male	7%	2%	14%	12%	63%	3%
	Female	14%	2%	14%	26%	45%	

		Q19. Over the course of an entire year, do you use a clothesline to air dry laundry:		
		All the time / almost all of the time	Occasionally / some of the time	Almost never / never
AREA	Central	33%	25%	42%
	Eastern	38%	24%	38%
	Metro	5%	30%	65%
	GTA	35%	12%	53%
	Niagara / Hamilton	30%	22%	48%
	Southwest	24%	33%	43%
	North	9%	36%	55%

		Q19. Over the course of an entire year, do you use a clothesline to air dry laundry:		
		All the time / almost all of the time	Occasionally / some of the time	Almost never / never
Vote intent	Liberal	20%	30%	50%
	PC	30%	25%	45%
	NDP	36%	14%	50%
	Green	14%	43%	43%

		Q19. Over the course of an entire year, do you use a clothesline to air dry laundry:		
		All the time / almost all of the time	Occasionally / some of the time	Almost never / never
D1. What type of dwelling do you live in?	Detached, single-family home	31%	25%	44%
	A semi-detached or townhouse	21%	42%	37%
	A high-rise condominium or apartment building	6%	11%	83%

	Q19. Over the course of an entire year, do you use a clothesline to air dry laundry:		
	All the time / almost all of the time	Occasionally / some of the time	Almost never / never
D2. Which of the following age categories may I place you in?	17%	50%	33%
18-34	26%	28%	46%
35-54	30%	11%	60%
55 and over			

	Q19. Over the course of an entire year, do you use a clothesline to air dry laundry:		
	All the time / almost all of the time	Occasionally / some of the time	Almost never / never
D3. Finally, what is your combined family income?	35%	13%	52%
Under \$35,000	13%	45%	42%
Under \$75,000	20%	24%	57%
\$75,000 and over			

	Q19. Over the course of an entire year, do you use a clothesline to air dry laundry:		
	All the time / almost all of the time	Occasionally / some of the time	Almost never / never
D4. Gender Male	19%	25%	56%
Female	32%	26%	42%

		Q21. In a typical day, how much time do you spend commuting in a personal vehicle?						
		3-4 hours	2-3 hours	1-2 hours	Up to one hour	None - I take public transit	None (Other)	Don't know
AREA	Central	17%		33%	33%		17%	
	Eastern			5%	57%	14%	14%	10%
	Metro			15%	45%	20%	10%	10%
	GTA	6%	12%	12%	59%	6%	6%	
	Niagara / Hamilton		9%	13%	70%	4%	4%	
	Southwest		10%	10%	62%	5%	10%	5%
	North		18%	9%	64%		9%	

		Q21. In a typical day, how much time do you spend commuting in a personal vehicle?						
		3-4 hours	2-3 hours	1-2 hours	Up to one hour	None - I take public transit	None (Other)	Don't know
Vote intent	Liberal	3%	5%	23%	53%	8%	8%	3%
	PC	5%	5%	7%	68%	5%	9%	2%
	NDP		21%	14%	36%	14%	7%	7%
	Green		14%		43%	14%	14%	14%

		Q21. In a typical day, how much time do you spend commuting in a personal vehicle?						
		3-4 hours	2-3 hours	1-2 hours	Up to one hour	None - I take public transit	None (Other)	Don't know
D1. What type of dwelling do you live in?	Detached, single-family home	2%	5%	15%	63%	5%	8%	3%
	A semi-detached or townhouse	5%	21%	11%	37%	11%	11%	5%
	A high-rise condominium or apartment building			6%	50%	22%	17%	6%

		Q21. In a typical day, how much time do you spend commuting in a personal vehicle?						
		3-4 hours	2-3 hours	1-2 hours	Up to one hour	None - I take public transit	None (Other)	Don't know
D2. Which of the following age categories may I place you in?	18-34	4%	13%	4%	50%	8%	17%	4%
	35-54	4%	6%	19%	54%	7%	9%	2%
	55 and over		4%	11%	64%	9%	6%	6%

		Q21. In a typical day, how much time do you spend commuting in a personal vehicle?						
		3-4 hours	2-3 hours	1-2 hours	Up to one hour	None - I take public transit	None (Other)	Don't know
D3. Finally, what is your combined family income?	Under \$35,000		4%	22%	35%	13%	13%	13%
	Under \$75,000	6%	13%	13%	55%	6%	6%	
	\$75,000 and over	2%	6%	12%	71%	4%	6%	

	Q21. In a typical day, how much time do you spend commuting in a personal vehicle?						
	3-4 hours	2-3 hours	1-2 hours	Up to one hour	None - I take public transit	None (Other)	Don't know
D4.Gender Male	2%	7%	12%	59%	7%	8%	5%
Female	3%	6%	14%	55%	9%	11%	3%

		Q22. Compared to five years ago, do you spend more time commuting in an average day, less time or about the same amount of time?		
		More	Less	About the same
AREA	Central	8%	50%	42%
	Eastern	5%	71%	24%
	Metro	15%	30%	55%
	GTA	12%	35%	53%
	Niagara / Hamilton	17%	57%	26%
	Southwest		67%	33%
	North	9%	64%	27%

		Q22. Compared to five years ago, do you spend more time commuting in an average day, less time or about the same amount of time?		
		More	Less	About the same
Vote intent	Liberal	10%	45%	45%
	PC	9%	64%	27%
	NDP	7%	57%	36%
	Green	14%	57%	29%

		Q22. Compared to five years ago, do you spend more time commuting in an average day, less time or about the same amount of time?		
		More	Less	About the same
D1. What type of dwelling do you live in?	Detached, single-family home	10%	61%	28%
	A semi-detached or townhouse	11%	26%	63%
	A high-rise condominium or apartment building	6%	44%	50%

		Q22. Compared to five years ago, do you spend more time commuting in an average day, less time or about the same amount of time?		
		More	Less	About the same
D2. Which of the following age categories may I place you in?	18-34	13%	63%	25%
	35-54	13%	44%	43%
	55 and over	4%	60%	36%

		Q22. Compared to five years ago, do you spend more time commuting in an average day, less time or about the same amount of time?		
		More	Less	About the same
D3. Finally, what is your combined family income?	Under \$35,000	9%	52%	39%
	Under \$75,000	10%	58%	32%
	\$75,000 and over	14%	47%	39%

		Q22. Compared to five years ago, do you spend more time commuting in an average day, less time or about the same amount of time?		
		More	Less	About the same
D4.Gender	Male	10%	56%	34%
	Female	9%	52%	39%

		Q23. Saving money on gas					
		Not at all important	Not important	Neither important nor not important	Important	Very important	Don't know
AREA	Central				17%	75%	8%
	Eastern	5%	10%	5%	19%	62%	
	Metro	10%	10%	20%	15%	45%	
	GTA			29%	18%	47%	6%
	Niagara / Hamilton		9%	22%	4%	65%	
	Southwest	5%		10%	14%	62%	10%
	North			36%		64%	

		Q23. Saving money on gas					
		Not at all important	Not important	Neither important nor not important	Important	Very important	Don't know
Vote intent	Liberal	8%	8%	30%	13%	43%	
	PC		2%	7%	20%	66%	5%
	NDP			14%	7%	79%	
	Green			29%	14%	57%	

		Q23. Saving money on gas					
		Not at all important	Not important	Neither important nor not important	Important	Very important	Don't know
D1. What type of dwelling do you live in?	Detached, single-family home	2%	3%	16%	10%	64%	5%
	A semi-detached or townhouse	5%	11%	32%	21%	32%	
	A high-rise condominium or apartment building	6%	6%	6%	17%	67%	

		Q23. Saving money on gas					
		Not at all important	Not important	Neither important nor not important	Important	Very important	Don't know
D2. Which of the following age categories may I place you in?	18-34	4%		4%	4%	83%	4%
	35-54	2%	4%	22%	9%	61%	2%
	55 and over	4%	9%	17%	21%	45%	4%

		Q23. Saving money on gas					
		Not at all important	Not important	Neither important nor not important	Important	Very important	Don't know
D3. Finally, what is your combined family income?	Under \$35,000	4%	13%	9%	9%	65%	
	Under \$75,000	6%		29%	26%	39%	
	\$75,000 and over	2%	6%	16%	8%	65%	4%

		Q23. Saving money on gas					
		Not at all important	Not important	Neither important nor not important	Important	Very important	Don't know
D4.Gender	Male	5%	3%	22%	14%	53%	3%
	Female	2%	6%	12%	12%	65%	3%

		Q24. Having government incentives for driving alternatives (such as fuel efficient vehicles or transit)					
		Not at all important	Not important	Neither important nor not important	Important	Very important	Don't know
AREA	Central	17%	8%		8%	58%	8%
	Eastern	5%	10%	10%	29%	48%	
	Metro	5%	10%	25%	15%	40%	5%
	GTA		6%	6%	24%	59%	6%
	Niagara / Hamilton			17%	17%	61%	4%
	Southwest			24%	29%	43%	5%
	North			18%	27%	55%	

		Q24. Having government incentives for driving alternatives (such as fuel efficient vehicles or transit)					
		Not at all important	Not important	Neither important nor not important	Important	Very important	Don't know
Vote intent	Liberal		3%	15%	30%	48%	5%
	PC	5%	5%	14%	30%	45%	2%
	NDP			14%	14%	71%	
	Green	14%		14%		71%	

		Q24. Having government incentives for driving alternatives (such as fuel efficient vehicles or transit)					
		Not at all important	Not important	Neither important nor not important	Important	Very important	Don't know
D1. What type of dwelling do you live in?	Detached, single-family home	3%	5%	15%	23%	50%	5%
	A semi-detached or townhouse		5%	16%	32%	42%	5%
	A high-rise condominium or apartment building	6%	6%	17%	6%	67%	

		Q24. Having government incentives for driving alternatives (such as fuel efficient vehicles or transit)					
		Not at all important	Not important	Neither important nor not important	Important	Very important	Don't know
D2. Which of the following age categories may I place you in?	18-34	4%		8%	29%	54%	4%
	35-54	6%	4%	13%	26%	52%	
	55 and over		9%	21%	13%	49%	9%

		Q24. Having government incentives for driving alternatives (such as fuel efficient vehicles or transit)					
		Not at all important	Not important	Neither important nor not important	Important	Very important	Don't know
D3. Finally, what is your combined family income?	Under \$35,000	4%	9%	9%	4%	65%	9%
	Under \$75,000	3%	3%	26%	23%	45%	
	\$75,000 and over		6%	16%	22%	55%	2%

		Q24. Having government incentives for driving alternatives (such as fuel efficient vehicles or transit)					
		Not at all important	Not important	Neither important nor not important	Important	Very important	Don't know
D4. Gender	Male	5%	5%	17%	24%	47%	2%
	Female	2%	5%	14%	20%	55%	6%

		Q25. Having convenient alternatives (such as transit, or bike lanes)					
		Not at all important	Not important	Neither important nor not important	Important	Very important	Don't know
AREA	Central	8%	8%	25%	17%	42%	
	Eastern	19%		14%	24%	38%	5%
	Metro	10%	5%	10%	20%	45%	10%
	GTA		6%	12%	24%	53%	6%
	Niagara / Hamilton			35%	9%	52%	4%
	Southwest		14%	5%	43%	33%	5%
	North		9%	9%	27%	55%	

		Q25. Having convenient alternatives (such as transit, or bike lanes)					
		Not at all important	Not important	Neither important nor not important	Important	Very important	Don't know
Vote intent	Liberal	5%	5%	8%	28%	55%	
	PC	5%	5%	18%	23%	45%	5%
	NDP	7%	14%	21%	7%	50%	
	Green		14%	14%	14%	57%	

		Q25. Having convenient alternatives (such as transit, or bike lanes)					
		Not at all important	Not important	Neither important nor not important	Important	Very important	Don't know
D1. What type of dwelling do you live in?	Detached, single-family home	6%	7%	22%	20%	40%	6%
	A semi-detached or townhouse	5%	5%	5%	42%	42%	
	A high-rise condominium or apartment building	6%			17%	72%	6%

		Q25. Having convenient alternatives (such as transit, or bike lanes)					
		Not at all important	Not important	Neither important nor not important	Important	Very important	Don't know
D2. Which of the following age categories may I place you in?	18-34	4%	8%	4%	33%	46%	4%
	35-54	6%	4%	19%	24%	48%	
	55 and over	6%	6%	19%	17%	40%	11%

		Q25. Having convenient alternatives (such as transit, or bike lanes)					
		Not at all important	Not important	Neither important nor not important	Important	Very important	Don't know
D3. Finally, what is your combined family income?	Under \$35,000	17%		9%	17%	48%	9%
	Under \$75,000	6%	10%	19%	26%	35%	3%
	\$75,000 and over		8%	18%	25%	49%	

		Q25. Having convenient alternatives (such as transit, or bike lanes)					
		Not at all important	Not important	Neither important nor not important	Important	Very important	Don't know
D4.Gender	Male	5%	10%	12%	22%	47%	3%
	Female	6%	2%	20%	24%	42%	6%

		Q26. Contributing to a greener and more efficient economy					
		Not at all important	Not important	Neither important nor not important	Important	Very important	Don't know
AREA	Central	8%		17%	17%	58%	
	Eastern			24%	29%	43%	5%
	Metro		10%	25%	35%	25%	5%
	GTA	6%		24%	6%	59%	6%
	Niagara / Hamilton	9%	4%	9%	26%	48%	4%
	Southwest		5%	19%	33%	33%	10%
	North			9%	36%	55%	

		Q26. Contributing to a greener and more efficient economy					
		Not at all important	Not important	Neither important nor not important	Important	Very important	Don't know
Vote intent	Liberal	8%	3%	23%	25%	40%	3%
	PC	2%		20%	32%	43%	2%
	NDP			14%	14%	71%	
	Green		14%	14%	14%	57%	

		Q26. Contributing to a greener and more efficient economy					
		Not at all important	Not important	Neither important nor not important	Important	Very important	Don't know
D1. What type of dwelling do you live in?	Detached, single-family home						
	A semi-detached or townhouse	5%	3%	17%	26%	43%	6%
	A high-rise condominium or apartment building		6%	17%	22%	50%	6%

		Q26. Contributing to a greener and more efficient economy					
		Not at all important	Not important	Neither important nor not important	Important	Very important	Don't know
D2. Which of the following age categories may I place you in?	18-34			17%	42%	38%	4%
	35-54	6%	6%	17%	17%	54%	2%
	55 and over	2%	2%	21%	30%	36%	9%

		Q26. Contributing to a greener and more efficient economy					
		Not at all important	Not important	Neither important nor not important	Important	Very important	Don't know
D3. Finally, what is your combined family income?	Under \$35,000		4%	9%	26%	52%	9%
	Under \$75,000	3%		19%	35%	39%	3%
	\$75,000 and over	6%	6%	20%	22%	47%	

		Q26. Contributing to a greener and more efficient economy					
		Not at all important	Not important	Neither important nor not important	Important	Very important	Don't know
D4.Gender	Male	3%	3%	25%	24%	37%	7%
	Female	3%	3%	12%	29%	50%	3%

		Q27. Helping to reduce the effects of climate change					
		Not at all important	Not important	Neither important nor not important	Important	Very important	Don't know
AREA	Central	8%		8%	33%	50%	
	Eastern	5%	5%	24%	5%	52%	10%
	Metro		15%	35%	20%	15%	15%
	GTA		6%	24%	12%	53%	6%
	Niagara / Hamilton	9%		13%	30%	43%	4%
	Southwest			19%	38%	43%	
	North			9%	45%	45%	

		Q27. Helping to reduce the effects of climate change					
		Not at all important	Not important	Neither important nor not important	Important	Very important	Don't know
Vote intent	Liberal	5%	8%	18%	20%	48%	3%
	PC	5%		23%	34%	36%	2%
	NDP			21%	14%	64%	
	Green		14%	14%	14%	57%	

		Q27. Helping to reduce the effects of climate change					
		Not at all important	Not important	Neither important nor not important	Important	Very important	Don't know
D1. What type of dwelling do you live in?	Detached, single-family home	5%	3%	19%	26%	43%	3%
	A semi-detached or townhouse		5%	21%	26%	37%	11%
	A high-rise condominium or apartment building		6%	22%	17%	44%	11%

		Q27. Helping to reduce the effects of climate change					
		Not at all important	Not important	Neither important nor not important	Important	Very important	Don't know
D2. Which of the following age categories may I place you in?	18-34	4%		21%	42%	33%	
	35-54	6%	4%	20%	17%	50%	4%
	55 and over		6%	19%	26%	38%	11%

		Q27. Helping to reduce the effects of climate change					
		Not at all important	Not important	Neither important nor not important	Important	Very important	Don't know
D3. Finally, what is your combined family income?	Under \$35,000		4%	9%	22%	52%	13%
	Under \$75,000	3%		23%	29%	39%	6%
	\$75,000 and over	4%	8%	24%	20%	45%	

		Q27. Helping to reduce the effects of climate change					
		Not at all important	Not important	Neither important nor not important	Important	Very important	Don't know
D4.Gender	Male	3%	5%	22%	27%	37%	5%
	Female	3%	3%	18%	23%	47%	6%

		Q28. Helping to reduce smog and asthma					
		Not at all important	Not important	Neither important nor not important	Important	Very important	Don't know
AREA	Central			8%	33%	58%	
	Eastern	5%		24%	10%	62%	
	Metro	5%	10%	15%	30%	30%	10%
	GTA			18%	12%	65%	6%
	Niagara / Hamilton			13%	30%	52%	4%
	Southwest	5%		14%	24%	57%	
	North		9%		36%	55%	

		Q28. Helping to reduce smog and asthma					
		Not at all important	Not important	Neither important nor not important	Important	Very important	Don't know
Vote intent	Liberal		5%	18%	25%	53%	
	PC	5%		11%	25%	57%	2%
	NDP			14%	21%	64%	
	Green		14%	14%	14%	57%	

		Q28. Helping to reduce smog and asthma					
		Not at all important	Not important	Neither important nor not important	Important	Very important	Don't know
D1. What type of dwelling do you live in?	Detached, single-family home			15%	26%	53%	3%
	A semi-detached or townhouse	2%	11%	16%	21%	53%	
	A high-rise condominium or apartment building	6%	6%	11%	17%	56%	6%

		Q28. Helping to reduce smog and asthma					
		Not at all important	Not important	Neither important nor not important	Important	Very important	Don't know
D2. Which of the following age categories may I place you in?	18-34	8%	4%	8%	29%	50%	
	35-54		4%	15%	22%	57%	2%
	55 and over	2%		17%	23%	51%	6%

		Q28. Helping to reduce smog and asthma					
		Not at all important	Not important	Neither important nor not important	Important	Very important	Don't know
D3. Finally, what is your combined family income?	Under \$35,000		4%	9%	22%	52%	13%
	Under \$75,000	3%	3%	13%	19%	61%	
	\$75,000 and over	2%		16%	29%	53%	

		Q28. Helping to reduce smog and asthma					
		Not at all important	Not important	Neither important nor not important	Important	Very important	Don't know
D4. Gender	Male	3%	3%	15%	29%	47%	2%
	Female	2%	2%	14%	20%	59%	5%

		Q30. Being able to walk to local stores				
		Not at all important	Not important	Neither important nor not important	Important	Very important
AREA	Central		8%	17%	17%	58%
	Eastern	14%	10%	10%	10%	57%
	Metro	10%	5%	5%		80%
	GTA	6%		12%	24%	59%
	Niagara / Hamilton		9%	26%	17%	48%
	Southwest	10%			38%	52%
	North		18%	9%	36%	36%

		Q30. Being able to walk to local stores				
		Not at all important	Not important	Neither important nor not important	Important	Very important
Vote intent	Liberal	10%	3%	13%	18%	58%
	PC	7%	11%	7%	25%	50%
	NDP	7%	7%	7%	7%	71%
	Green			43%	14%	43%

		Q30. Being able to walk to local stores				
		Not at all important	Not important	Neither important nor not important	Important	Very important
D1. What type of dwelling do you live in?	Detached, single-family home	7%	8%	14%	18%	53%
	A semi-detached or townhouse	5%		11%	32%	53%
	A high-rise condominium or apartment building	6%	6%		11%	78%

		Q30. Being able to walk to local stores				
		Not at all important	Not important	Neither important nor not important	Important	Very important
D2. Which of the following age categories may I place you in?	18-34	4%	8%	8%	29%	50%
	35-54	2%	4%	17%	22%	56%
	55 and over	13%	9%	6%	11%	62%

		Q30. Being able to walk to local stores				
		Not at all important	Not important	Neither important nor not important	Important	Very important
D3. Finally, what is your combined family income?	Under \$35,000	4%	4%		13%	78%
	Under \$75,000	10%	6%	19%	26%	39%
	\$75,000 and over	6%	10%	12%	20%	53%

		Q30. Being able to walk to local stores				
		Not at all important	Not important	Neither important nor not important	Important	Very important
D4.Gender	Male	7%	5%	10%	24%	54%
	Female	6%	8%	12%	15%	59%

		Q31. Having friends and neighbours within easy walking distance				
		Not at all important	Not important	Neither important nor not important	Important	Very important
D4. Gender	Male	10%	10%	14%	27%	39%
	Female	6%	14%	17%	18%	45%

		Q31. Having friends and neighbours within easy walking distance				
		Not at all important	Not important	Neither important nor not important	Important	Very important
AREA	Central	17%	8%	17%	8%	50%
	Eastern	10%	14%	14%	19%	43%
	Metro	5%	10%	20%	40%	25%
	GTA	6%	6%	12%	18%	59%
	Niagara / Hamilton	9%	26%	9%	26%	30%
	Southwest	10%		14%	24%	52%
	North		18%	27%	9%	45%

		Q31. Having friends and neighbours within easy walking distance				
		Not at all important	Not important	Neither important nor not important	Important	Very important
Vote intent	Liberal	5%	15%	15%	33%	33%
	PC	14%	11%	11%	25%	39%
	NDP	7%	7%	14%	7%	64%
	Green	14%		29%		57%

		Q31. Having friends and neighbours within easy walking distance				
		Not at all important	Not important	Neither important nor not important	Important	Very important
D1. What type of dwelling do you live in?	Detached, single-family home	10%	14%	11%	19%	45%
	A semi-detached or townhouse		5%	37%	32%	26%
	A high-rise condominium or apartment building	6%	11%	11%	28%	44%

		Q31. Having friends and neighbours within easy walking distance				
		Not at all important	Not important	Neither important nor not important	Important	Very important
D2. Which of the following age categories may I place you in?	18-34	8%	13%	21%	33%	25%
	35-54	6%	17%	17%	19%	43%
	55 and over	11%	6%	11%	21%	51%

		Q31. Having friends and neighbours within easy walking distance				
		Not at all important	Not important	Neither important nor not important	Important	Very important
D3. Finally, what is your combined family income?	Under \$35,000	4%	9%	13%	13%	61%
	Under \$75,000	3%	6%	29%	26%	35%
	\$75,000 and over	12%	16%	12%	24%	37%

		Q32. Living close enough to work or school that I can get there by walking, transit or cycling					
		Not at all important	Not important	Neither important nor not important	Important	Very important	Don't know
AREA	Central	17%		8%	8%	58%	8%
	Eastern	10%	10%	14%	14%	52%	
	Metro	10%		10%	30%	50%	
	GTA	6%	6%	18%	18%	47%	6%
	Niagara / Hamilton	13%	13%	9%	9%	57%	
	Southwest	10%	5%	10%	29%	43%	5%
	North		9%	18%	27%	45%	

		Q32. Living close enough to work or school that I can get there by walking, transit or cycling					
		Not at all important	Not important	Neither important nor not important	Important	Very important	Don't know
Vote intent	Liberal	10%	3%	20%	25%	40%	3%
	PC	9%	14%	7%	18%	50%	2%
	NDP		7%	7%	14%	71%	
	Green	14%		29%	14%	43%	

		Q32. Living close enough to work or school that I can get there by walking, transit or cycling					
		Not at all important	Not important	Neither important nor not important	Important	Very important	Don't know
D1. What type of dwelling do you live in?	Detached, single-family home	11%	8%	13%	20%	45%	2%
	A semi-detached or townhouse			11%	26%	63%	
	A high-rise condominium or apartment building	11%	6%	11%	6%	61%	6%

		Q32. Living close enough to work or school that I can get there by walking, transit or cycling					
		Not at all important	Not important	Neither important nor not important	Important	Very important	Don't know
D2. Which of the following age categories may I place you in?	18-34		8%	13%	38%	42%	
	35-54	7%	6%	13%	17%	57%	
	55 and over	17%	6%	11%	13%	47%	6%

		Q32. Living close enough to work or school that I can get there by walking, transit or cycling					
		Not at all important	Not important	Neither important nor not important	Important	Very important	Don't know
D3. Finally, what is your combined family income?	Under \$35,000	13%		13%	13%	61%	
	Under \$75,000	10%	10%	13%	23%	42%	3%
	\$75,000 and over	8%	10%	16%	24%	41%	2%

		Q32. Living close enough to work or school that I can get there by walking, transit or cycling					
		Not at all important	Not important	Neither important nor not important	Important	Very important	Don't know
D4. Gender	Male	7%	8%	8%	24%	51%	2%
	Female	12%	5%	15%	15%	50%	3%

		Q33. Having public green spaces such as parks for recreation in my neighbourhood					
		Not at all important	Not important	Neither important nor not important	Important	Very important	Don't know
AREA	Central	8%	8%	8%	42%	33%	6%
	Eastern	5%		10%	14%	71%	
	Metro	5%		10%	25%	60%	
	GTA	6%		6%	18%	65%	
	Niagara / Hamilton				26%	74%	
	Southwest		5%	19%	5%	71%	
	North			9%	45%	45%	

		Q33. Having public green spaces such as parks for recreation in my neighbourhood					
		Not at all important	Not important	Neither important nor not important	Important	Very important	Don't know
Vote intent	Liberal	3%	3%	8%	23%	65%	2%
	PC	5%		11%	27%	55%	
	NDP			7%	14%	79%	
	Green	14%		29%	14%	43%	

		Q33. Having public green spaces such as parks for recreation in my neighbourhood					
		Not at all important	Not important	Neither important nor not important	Important	Very important	Don't know
D1. What type of dwelling do you live in?	Detached, single-family home	2%	2%	9%	27%	59%	5%
	A semi-detached or townhouse	5%		11%	5%	74%	
	A high-rise condominium or apartment building	6%		6%	17%	72%	

		Q33. Having public green spaces such as parks for recreation in my neighbourhood					
		Not at all important	Not important	Neither important nor not important	Important	Very important	Don't know
D2. Which of the following age categories may I place you in?	18-34	4%		17%	17%	63%	2%
	35-54	2%	2%	4%	33%	57%	
	55 and over	4%	2%	11%	13%	70%	

		Q33. Having public green spaces such as parks for recreation in my neighbourhood					
		Not at all important	Not important	Neither important nor not important	Important	Very important	Don't know
D3. Finally, what is your combined family income?	Under \$35,000	9%	4%	4%	13%	70%	
	Under \$75,000			10%	29%	61%	
	\$75,000 and over	2%	2%	12%	25%	57%	2%

		Q33. Having public green spaces such as parks for recreation in my neighbourhood					
		Not at all important	Not important	Neither important nor not important	Important	Very important	Don't know
D4.Gender	Male	5.1%	3.4%	8.5%	16.9%	66.1%	
	Female	1.5%		9.1%	27.3%	60.6%	1.5%

		Q34. How closely does this definition describe the community where you live now?					
		Not at all closely	Not closely	Neither closely nor not closely	Closely	Very closely	Don't know
AREA	Central	33%	42%	8%	17%		6%
	Eastern	19%	5%	10%	24%	43%	
	Metro	10%			25%	65%	
	GTA	6%	12%	35%	12%	29%	
	Niagara / Hamilton	9%	17%	9%	26%	39%	
	Southwest	24%		29%	24%	24%	
	North		18%	9%	55%	18%	

		Q34. How closely does this definition describe the community where you live now?				
		Not at all closely	Not closely	Neither closely nor not closely	Closely	Very closely
Vote intent	Liberal	10%	10%	18%	15%	48%
	PC	16%	14%	16%	39%	16%
	NDP	21%	14%	14%	29%	21%
	Green	29%		14%	29%	29%

		Q34. How closely does this definition describe the community where you live now?					
		Not at all closely	Not closely	Neither closely nor not closely	Closely	Very closely	Don't know
D1. What type of dwelling do you live in?	Detached, single-family home	16%	15%	15%	27%	26%	1%
	A semi-detached or townhouse	11%		16%	21%	53%	
	A high-rise condominium or apartment building	11%	6%	11%	17%	56%	

		Q34. How closely does this definition describe the community where you live now?					
		Not at all closely	Not closely	Neither closely nor not closely	Closely	Very closely	Don't know
D2. Which of the following age categories may I place you in?	18-34	21%	8%	13%	29%	29%	
	35-54	9%	11%	15%	22%	43%	
	55 and over	17%	13%	15%	26%	28%	2%

		Q34. How closely does this definition describe the community where you live now?				
		Not at all closely	Not closely	Neither closely nor not closely	Closely	Very closely
D3. Finally, what is your combined family income?	Under \$35,000	22%	13%	9%	22%	35%
	Under \$75,000	16%	13%	29%	13%	29%
	\$75,000 and over	10%	10%	10%	33%	37%

		Q34. How closely does this definition describe the community where you live now?					
		Not at all closely	Not closely	Neither closely nor not closely	Closely	Very closely	Don't know
D4.Gender	Male	22%	7%	19%	22%	31%	
	Female	8%	15%	11%	27%	38%	2%

		Q35. How closely does this definition describe the kind of community you would LIKE to live in? Please respond using a scale from one not at all to five very closely.					
		Not at all closely	Not closely	Neither closely nor not closely	Closely	Very closely	Don't know
AREA	Central	25%		17%	25%	33%	
	Eastern	14%		14%	19%	52%	
	Metro			5%	20%	70%	5%
	GTA		12%	18%	18%	47%	6%
	Niagara / Hamilton	17%	17%	22%	13%	30%	
	Southwest	14%	5%	5%	24%	52%	
	North		18%	9%	27%	45%	

		Q35. How closely does this definition describe the kind of community you would LIKE to live in? Please respond using a scale from one not at all to five very closely.				
		Not at all closely	Not closely	Neither closely nor not closely	Closely	Very closely
Vote intent	Liberal	8%		5%	18%	70%
	PC	11%	11%	23%	25%	30%
	NDP	7%	14%		29%	50%
	Green	14%	29%	14%		43%

		Q35. How closely does this definition describe the kind of community you would LIKE to live in? Please respond using a scale from one not at all to five very closely.					
		Not at all closely	Not closely	Neither closely nor not closely	Closely	Very closely	Don't know
D1. What type of dwelling do you live in?	Detached, single-family home	15%	6%	16%	20%	41%	2%
	A semi-detached or townhouse			5%	32%	63%	
	A high-rise condominium or apartment building		22%	6%	6%	67%	

		Q35. How closely does this definition describe the kind of community you would LIKE to live in? Please respond using a scale from one not at all to five very closely.					
		Not at all closely	Not closely	Neither closely nor not closely	Closely	Very closely	Don't know
D2. Which of the following age categories may I place you in?	18-34	4%	8%	13%	29%	46%	
	35-54	9%	9%	9%	22%	48%	2%
	55 and over	15%	4%	17%	13%	49%	2%

		Q35. How closely does this definition describe the kind of community you would LIKE to live in? Please respond using a scale from one not at all to five very closely.					
		Not at all closely	Not closely	Neither closely nor not closely	Closely	Very closely	Don't know
D3. Finally, what is your combined family income?	Under \$35,000	4%	17%	13%	17%	48%	
	Under \$75,000	13%	3%	16%	23%	45%	
	\$75,000 and over	10%	2%	12%	24%	51%	2%

		Q35. How closely does this definition describe the kind of community you would LIKE to live in? Please respond using a scale from one not at all to five very closely.					
		Not at all closely	Not closely	Neither closely nor not closely	Closely	Very closely	Don't know
D4.Gender	Male	12%	7%	15%	24%	42%	
	Female	9%	8%	11%	17%	53%	3%

		Q36. I prefer to live in a bigger house with a large yard, even if that means that more farmland and natural areas has to be used up to support this lifestyle					
		Strongly disagree	Disagree	Neither agree nor disagree	Agree	Strongly agree	Don't know
AREA	Central	42%	25%	25%		8%	
	Eastern	62%	14%	5%		19%	
	Metro	75%	10%	5%	5%		5%
	GTA	41%	29%	12%	12%		6%
	Niagara / Hamilton	52%	26%	4%	4%	4%	9%
	Southwest	38%	33%	19%	10%		
	North	27%	36%	27%	9%		

		Q36. I prefer to live in a bigger house with a large yard, even if that means that more farmland and natural areas has to be used up to support this lifestyle					
		Strongly disagree	Disagree	Neither agree nor disagree	Agree	Strongly agree	Don't know
Vote intent	Liberal	65%	18%	3%	3%	5%	8%
	PC	32%	39%	14%	9%	7%	
	NDP	57%	21%	14%		7%	
	Green	57%	14%	29%			

		Q36. I prefer to live in a bigger house with a large yard, even if that means that more farmland and natural areas has to be used up to support this lifestyle					
		Strongly disagree	Disagree	Neither agree nor disagree	Agree	Strongly agree	Don't know
D1. What type of dwelling do you live in?	Detached, single-family home	44%	27%	14%	5%	7%	3%
	A semi-detached or townhouse	53%	26%	5%	11%		5%
	A high-rise condominium or apartment building	78%	6%	11%	6%		

		Q36. I prefer to live in a bigger house with a large yard, even if that means that more farmland and natural areas has to be used up to support this lifestyle					
		Strongly disagree	Disagree	Neither agree nor disagree	Agree	Strongly agree	Don't know
D2. Which of the following age categories may I place you in?	18-34	29%	50%	13%	4%	4%	
	35-54	56%	19%	7%	9%	6%	4%
	55 and over	55%	17%	17%	2%	4%	4%

		Q36. I prefer to live in a bigger house with a large yard, even if that means that more farmland and natural areas has to be used up to support this lifestyle					
		Strongly disagree	Disagree	Neither agree nor disagree	Agree	Strongly agree	Don't know
D3. Finally, what is your combined family income?	Under \$35,000	52%	13%	13%	9%	9%	4%
	Under \$75,000	65%	26%	3%	3%	3%	
	\$75,000 and over	49%	24%	16%	4%	4%	4%

		Q36. I prefer to live in a bigger house with a large yard, even if that means that more farmland and natural areas has to be used up to support this lifestyle					
		Strongly disagree	Disagree	Neither agree nor disagree	Agree	Strongly agree	Don't know
D4. Gender	Male	47%	29%	12%	8%	3%	
	Female	53%	20%	12%	3%	6%	6%

		Q37. I would drive less if there were other convenient, safe transportation options, like public transit or cycling.					
		Strongly disagree	Disagree	Neither agree nor disagree	Agree	Strongly agree	Don't know
AREA	Central	8%	8%	17%	17%	42%	8%
	Eastern	10%		14%	29%	33%	14%
	Metro	10%	10%	10%	25%	30%	15%
	GTA	6%	6%	24%	29%	29%	6%
	Niagara / Hamilton		35%	17%	17%	30%	
	Southwest	14%	14%		29%	29%	14%
	North		9%	36%	27%	18%	9%

		Q37. I would drive less if there were other convenient, safe transportation options, like public transit or cycling.					
		Strongly disagree	Disagree	Neither agree nor disagree	Agree	Strongly agree	Don't know
Vote intent	Liberal	3%	13%	10%	30%	30%	15%
	PC	5%	16%	23%	23%	27%	7%
	NDP	7%		14%	14%	57%	7%
	Green	29%	14%	14%	14%	29%	

		37. I would drive less if there were other convenient, safe transportation options, like public transit or cycling.					
		Strongly disagree	Disagree	Neither agree nor disagree	Agree	Strongly agree	Don't know
D1. What type of dwelling do you live in?	Detached, single-family home	8%	15%	18%	23%	30%	7%
	A semi-detached or townhouse		5%	11%	47%	21%	16%
	A high-rise condominium or apartment building	11%	11%	6%	11%	44%	17%

		37. I would drive less if there were other convenient, safe transportation options, like public transit or cycling.					
		Strongly disagree	Disagree	Neither agree nor disagree	Agree	Strongly agree	Don't know
D2. Which of the following age categories may I place you in?	18-34	8%	13%	13%	46%	21%	
	35-54	9%	7%	17%	19%	39%	9%
	55 and over	4%	19%	15%	21%	26%	15%

		37. I would drive less if there were other convenient, safe transportation options, like public transit or cycling.					
		Strongly disagree	Disagree	Neither agree nor disagree	Agree	Strongly agree	Don't know
D3. Finally, what is your combined family income?	Under \$35,000	4%	17%	9%	17%	35%	17%
	Under \$75,000	10%	16%	13%	26%	26%	10%
	\$75,000 and over	6%	8%	22%	27%	31%	6%

		Q37. I would drive less if there were other convenient, safe transportation options, like public transit or cycling.					
		Strongly disagree	Disagree	Neither agree nor disagree	Agree	Strongly agree	Don't know
D4.Gender	Male	10%	12%	12%	29%	32%	5%
	Female	5%	14%	18%	21%	29%	14%

		Q38. I would ride my bike to work or school or shopping if there were safe bicycle routes and bicycle paths in my community					
		Strongly disagree	Disagree	Neither agree nor disagree	Agree	Strongly agree	Don't know
AREA	Central	17%		17%	17%	42%	8%
	Eastern	14%	5%	5%	14%	52%	10%
	Metro	35%	10%	15%	10%	20%	10%
	GTA	6%	12%	18%	12%	35%	18%
	Niagara / Hamilton	17%	4%	30%	30%	9%	9%
	Southwest		14%	19%	38%	19%	10%
	North	9%	18%	18%	18%	9%	27%

		Q38. I would ride my bike to work or school or shopping if there were safe bicycle routes and bicycle paths in my community					
		Strongly disagree	Disagree	Neither agree nor disagree	Agree	Strongly agree	Don't know
Vote intent	Liberal	23%	3%	23%	18%	28%	8%
	PC	14%	9%	16%	30%	18%	14%
	NDP		14%		7%	71%	7%
	Green	29%	14%	29%	29%		

		Q38. I would ride my bike to work or school or shopping if there were safe bicycle routes and bicycle paths in my community					
		Strongly disagree	Disagree	Neither agree nor disagree	Agree	Strongly agree	Don't know
D1. What type of dwelling do you live in?	Detached, single-family home	14%	11%	16%	24%	24%	11%
	A semi-detached or townhouse	11%		32%	16%	32%	11%
	A high-rise condominium or apartment building	22%	6%	11%	11%	33%	17%

		Q38. I would ride my bike to work or school or shopping if there were safe bicycle routes and bicycle paths in my community					
		Strongly disagree	Disagree	Neither agree nor disagree	Agree	Strongly agree	Don't know
D2. Which of the following age categories may I place you in?	18-34	8%	13%	13%	38%	21%	8%
	35-54	15%	6%	24%	13%	31%	11%
	55 and over	17%	11%	13%	21%	23%	15%

		Q38. I would ride my bike to work or school or shopping if there were safe bicycle routes and bicycle paths in my community					
		Strongly disagree	Disagree	Neither agree nor disagree	Agree	Strongly agree	Don't know
D3. Finally, what is your combined family income?	Under \$35,000	13%	9%	4%	13%	48%	13%
	Under \$75,000	19%	13%	23%	13%	23%	10%
	\$75,000 and over	16%	8%	24%	27%	18%	8%

	Q38. I would ride my bike to work or school or shopping if there were safe bicycle routes and bicycle paths in my community					
	Strongly disagree	Disagree	Neither agree nor disagree	Agree	Strongly agree	Don't know
D4.Gender Male	15%	7%	20%	19%	29%	10%
Female	14%	11%	15%	23%	24%	14%

		Q39. Which of the following statements most closely reflects your view of the role that the government of Ontario should have with respect to creating a strong future for Ontario				
		Governme nt should be smaller and play a limited role	Governme nt should be a catalyst for voluntary change through	Governme nt needs to be more hands on by providing programs a	Governme nt should set clear rules for developm ent through le	Don't know
AREA	Central	17%	8%	42%	25%	8%
	Eastern	19%	14%	43%	19%	5%
	Metro		30%	35%	35%	
	GTA	12%	18%	29%	29%	12%
	Niagara / Hamilton	22%	13%	26%	39%	
	Southwest	5%	10%	43%	29%	14%
	North	9%	18%	27%	27%	18%

		Q39. Which of the following statements most closely reflects your view of the role that the government of Ontario should have with respect to creating a strong future for Ontario				
		Governme nt should be smaller and play a limited role	Governme nt should be a catalyst for voluntary change through	Governme nt needs to be more hands on by providing programs a	Governme nt should set clear rules for developm ent through le	Don't know
Vote intent	Liberal	3%	15%	38%	40%	5%
	PC	20%	18%	27%	27%	7%
	NDP	14%		43%	29%	14%
	Green		43%	43%		14%

		Q39. Which of the following statements most closely reflects your view of the role that the government of Ontario should have with respect to creating a strong future for Ontario				
		Governme nt should be smaller and play a limited role	Governme nt should be a catalyst for voluntary change through	Governme nt needs to be more hands on by providing programs a	Governme nt should set clear rules for developm ent through le	Don't know
D1. What type of dwelling do you live in?	Detached, single-family home	16%	11%	36%	27%	9%
	A semi-detached or townhouse	5%	26%	32%	37%	
	A high-rise condominium or apartment building		28%	33%	33%	6%

		Q39. Which of the following statements most closely reflects your view of the role that the government of Ontario should have with respect to creating a strong future for Ontario				
		Governme nt should be smaller and play a limited role	Governme nt should be a catalyst for voluntary change through	Governme nt needs to be more hands on by providing programs a	Governme nt should set clear rules for developm ent through le	Don't know
D2. Which of the following age categories may I place you in?	18-34	8%	17%	42%	33%	
	35-54	11%	19%	24%	39%	7%
	55 and over	15%	13%	45%	17%	11%

		Q39. Which of the following statements most closely reflects your view of the role that the government of Ontario should have with respect to creating a strong future for Ontario				
		Governme nt should be smaller and play a limited role	Governme nt should be a catalyst for voluntary change through	Governme nt needs to be more hands on by providing programs a	Governme nt should set clear rules for developm ent through le	Don't know
D3. Finally, what is your combined family income?	Under \$35,000	4%	4%	65%	22%	4%
	Under \$75,000	16%	13%	23%	35%	13%
	\$75,000 and over	6%	22%	29%	39%	4%

		Q39. Which of the following statements most closely reflects your view of the role that the government of Ontario should have with respect to creating a strong future for Ontario				
		Government should be smaller and play a limited role	Government should be a catalyst for voluntary change through	Government needs to be more hands on by providing programs a	Government should set clear rules for development through le	Don't know
D4.Gender	Male	14%	15%	34%	29%	8%
	Female	11%	17%	36%	30%	6%

		Q40. Which of the following statements most closely reflects your view on taxation in Ontario?			
		Taxes should be increased to improve health, education, and	Taxes should be maintained at current levels to keep the exi	Taxes should be reduced even if levels of health, education	Don't know
AREA	Central	17%	67%	17%	
	Eastern	29%	52%	10%	10%
	Metro	30%	65%		5%
	GTA	24%	41%	24%	12%
	Niagara / Hamilton	9%	61%	30%	
	Southwest	14%	57%	10%	19%
	North	9%	82%	9%	

		Q40. Which of the following statements most closely reflects your view on taxation in Ontario?			
		Taxes should be increased to improve health, education, and	Taxes should be maintained at current levels to keep the exi	Taxes should be reduced even if levels of health, education	Don't know
Vote intent	Liberal	28%	65%	5%	3%
	PC	9%	55%	30%	7%
	NDP	21%	50%	14%	14%
	Green	14%	71%		14%

		Q40. Which of the following statements most closely reflects your view on taxation in Ontario?			
		Taxes should be increased to improve health, education, and	Taxes should be maintained at current levels to keep the exi	Taxes should be reduced even if levels of health, education	Don't know
D1. What type of dwelling do you live in?	Detached, single-family home	13%	60%	18%	9%
	A semi-detached or townhouse	16%	74%	11%	
	A high-rise condominium or apartment building	56%	39%		6%

		Q40. Which of the following statements most closely reflects your view on taxation in Ontario?			
		Taxes should be increased to improve health, education, and	Taxes should be maintained at current levels to keep the exi	Taxes should be reduced even if levels of health, education	Don't know
D2. Which of the following age categories may I place you in?	18-34	13%	63%	17%	8%
	35-54	17%	65%	15%	4%
	55 and over	26%	51%	13%	11%

		Q40. Which of the following statements most closely reflects your view on taxation in Ontario?			
		Taxes should be increased to improve health, education, and	Taxes should be maintained at current levels to keep the exi	Taxes should be reduced even if levels of health, education	Don't know
D3. Finally, what is your combined family income?	Under \$35,000	13%	61%	9%	17%
	Under \$75,000	23%	61%	10%	6%
	\$75,000 and over	24%	65%	10%	2%

		Q40. Which of the following statements most closely reflects your view on taxation in Ontario?			
		Taxes should be increased to improve health, education, and	Taxes should be maintained at current levels to keep the exi	Taxes should be reduced even if levels of health, education	Don't know
D4. Gender	Male	17%	56%	20%	7%
	Female	21%	62%	9%	8%